

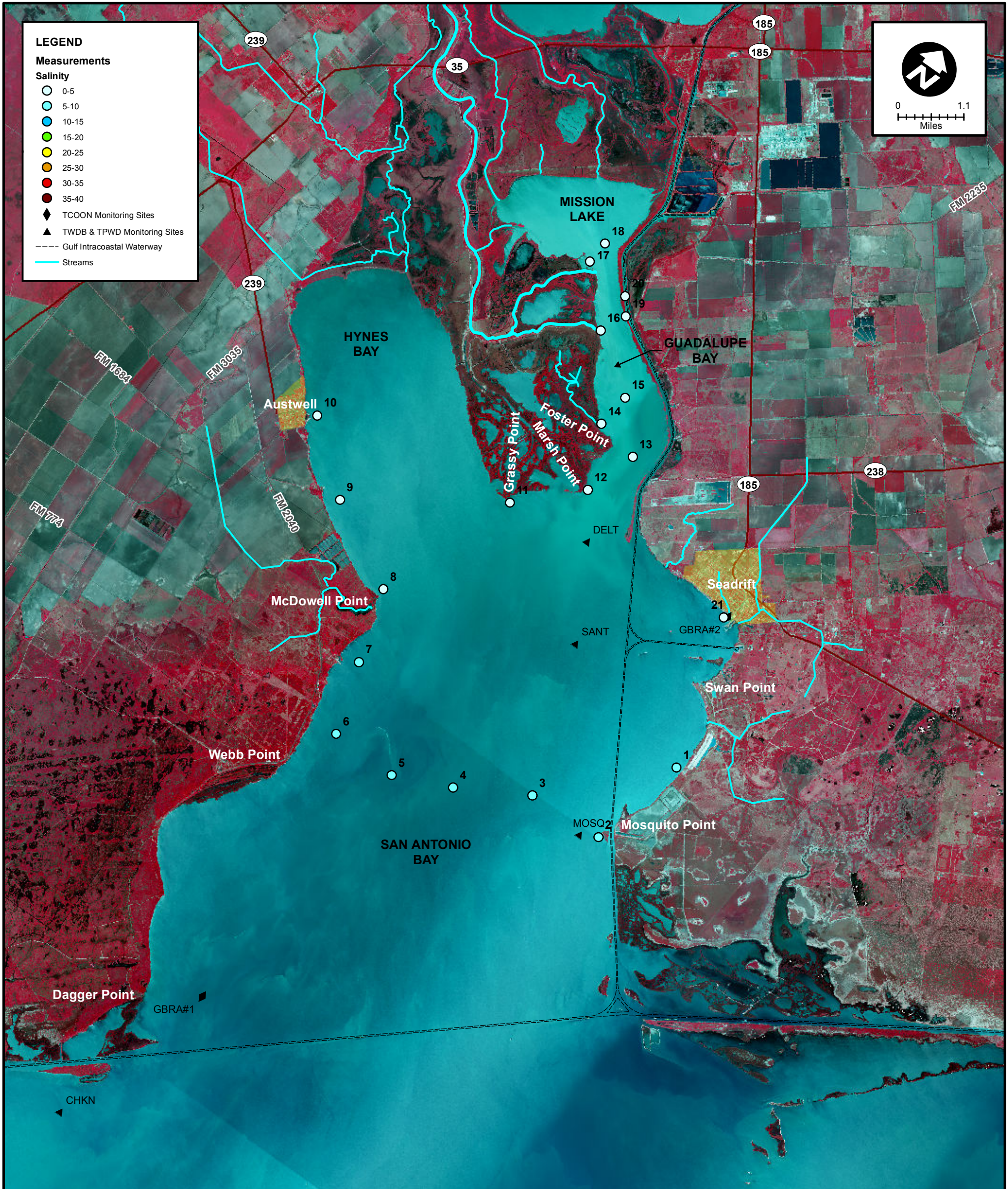
LEGEND

Measurements

Salinity

- 0-5
- 5-10
- 10-15
- 15-20
- 20-25
- 25-30
- 30-35
- 35-40

- ◆ TCOON Monitoring Sites
- ▲ TWDB & TPWD Monitoring Sites
- Gulf Intracoastal Waterway
- Streams



MEAS NO.	SITE DESCRIPTION	LATITUDE (N)	LONGITUDE (W)	TIME	TEMP (°C)	pH	DO (mg/L)	SC (µs)	SALINITY (PSU)	NOTES
1	Falcon Point	28 22 11.9	96 42 2.0	10:15	30.2				7.30	
2	Mosquito Point	28 20 43.3	96 42 27.7	10:25	30.3				8.40	
3	Mosquito Point to Webb Point (1/4 across)	28 20 41.5	96 43 44.9	10:25	30.3				6.30	
4	Mosquito Point to Webb Point (midpoint)	28 20 8.6	96 44 54.1	10:30	30.7				6.30	
5	Mosquito Point to Webb Point (3/4 across)	28 19 47.6	96 45 51.3	10:34	31.0				6.40	
6	Webb Point	28 19 50.5	96 46 59.4	10:39	30.8				6.20	
7	Hoppers Landing	28 20 53.7	96 47 20.5	10:46	31.4				6.80	
8	McDowell Point	28 21 58.5	96 47 40.6	10:52	30.5				3.00	
9	Hynes Bay between Austwell	28 22 42.0	96 49 5.2	10:57	30.9				2.70	
10	Austwell	28 23 32.1	96 50 10.4	11:03	30.7				2.40	
11	Grassy Point	28 24 2.6	96 46 44.4	11:14	30.5				2.70	
12	Marsh Point	28 24 49.9	96 45 47.8	11:19	30.7				1.10	
13	Guadalupe Bay Pipe #1	28 25 35.8	96 45 29.0	11:24	31.1				1.00	
14	Redfish Bayou	28 25 44.6	96 46 12.9	11:28	30.6				1.30	
15	Guadalupe Bay Pipe #2	28 26 14.9	96 46 7.8	11:32	30.6				0.40	
16	Guadalupe Bay at South Fork	28 26 51.7	96 47 4.9	11:45	31.1				0.40	
17	Mission Lake Sonde	28 27 36.6	96 47 51.6	12:03	31.9				0.30	
18	Mission Lake	28 27 56.9	96 47 49.3	12:11	30.7				0.30	
19	Hurricane Pass	28 27 14.4	96 46 52.1	12:15	31.1				0.60	
20	Barge Canal	28 27 28.5	96 47 3.8	12:17	31.2				0.60	
21	Seadrift	28 24 23.9	96 42 45.8	12:30	31.4				3.10	



SALINITY MEASUREMENT DATA
SAN ANTONIO BAY

DATE: 08/25/2015
 FIELD CREW: DA, CH, MH
 AVG. DAILY FLOW AT USGS TIVOLI GAUGE: 1,090 CFS