

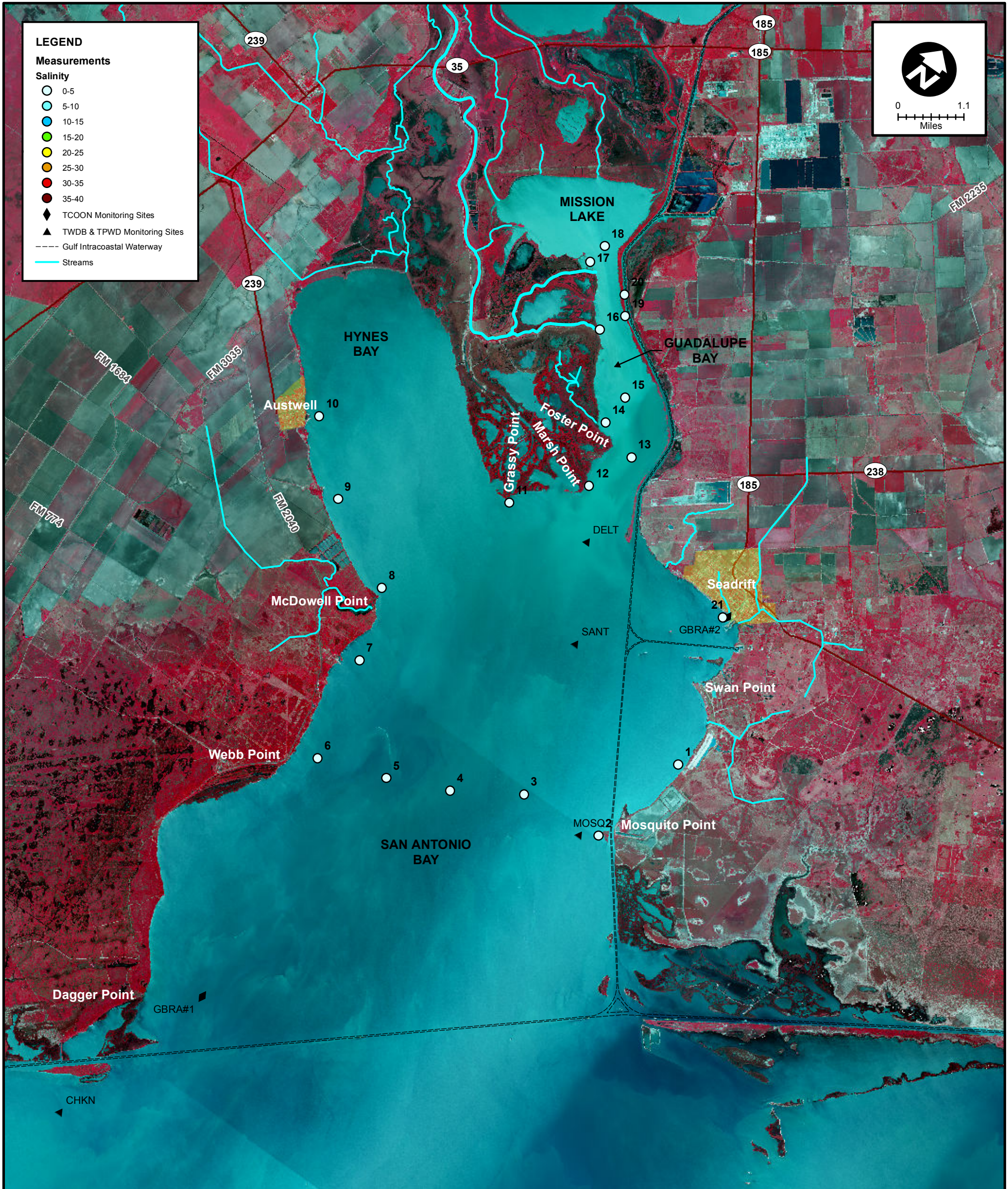
LEGEND

Measurements

Salinity

- 0-5
- 5-10
- 10-15
- 15-20
- 20-25
- 25-30
- 30-35
- 35-40

- ◆ TCOON Monitoring Sites
- ▲ TWDB & TPWD Monitoring Sites
- Gulf Intracoastal Waterway
- Streams



MEAS NO.	SITE DESCRIPTION	LATITUDE (N)	LONGITUDE (W)	TIME	TEMP (°C)	pH	DO (mg/L)	SC (µs)	SALINITY (ppt)	NOTES
1	Falcon Point	28 22 14.9	96 42 2.3	10:59	29.5				1.0	
2	Mosquito Point	28 20 44.6	96 42 28.5	11:11	29.7				1.1	
3	Mosquito Point to Webb Point (1/4 across)	28 20 38.3	96 43 52.3	11:17	29.7				1.2	
4	Mosquito Point to Webb Point (midpoint)	28 20 5.0	96 44 54.8	11:45	29.9				2.0	
5	Mosquito Point to Webb Point (3/4 across)	28 19 43.0	96 45 54.1	11:49	29.7				2.7	
6	Webb Point	28 19 23.9	96 47 1.2	11:53	30.2				3.3	
7	Hoppers Landing	28 20 55.3	96 47 20.8	11:56	30.1				3.5	
8	McDowell Point	28 21 58.7	96 47 42.4	12:16	30.6				1.1	
9	Hynes Bay between Austwell & McDowell Point	28 22 41.6	96 49 7.4	12:18	30.7				0.8	
10	Austwell	28 23 32.5	96 50 8.3	12:33	30.4				0.7	
11	Grassy Point	28 24 2.5	96 46 44.8	12:48	30.3				0.4	
12	Marsh Point	28 24 53.6	96 45 48.8	1:08	30.1				0.5	
13	Guadalupe Bay Pipe #1	28 25 34.9	96 45 29.7	1:10	30.3				0.3	
14	Redfish Bayou	28 25 47.6	96 46 10.1	1:15	30.6				0.3	
15	Guadalupe Bay Pipe #2	28 26 15.2	96 46 7.9	1:28	31.1				0.3	
16	Guadalupe Bay at South Fork	28 26 52.1	96 47 6.3	1:52	31.5				0.3	
17	Mission Lake Sonde	28 27 36.5	96 47 51.5	2:10	30.8				0.3	
18	Mission Lake	28 27 54.9	96 47 48.0	2:24	30.3				1.3	
19	Hurricane Pass	28 27 14.3	96 46 52.8	2:28	30.5				0.3	
20	Barge Canal	28 27 29.6	96 47 5.1	2:36	30.6				0.4	
21	Seadrift	28 24 23.3	96 42 46.5	3:45	30.9				1.5	



SALINITY MEASUREMENT DATA
SAN ANTONIO BAY

DATE:	7/13/2015
FIELD CREW:	DA, HC, CR
AVG. DAILY FLOW AT USGS TIVOLI GAUGE:	2,330 CFS