

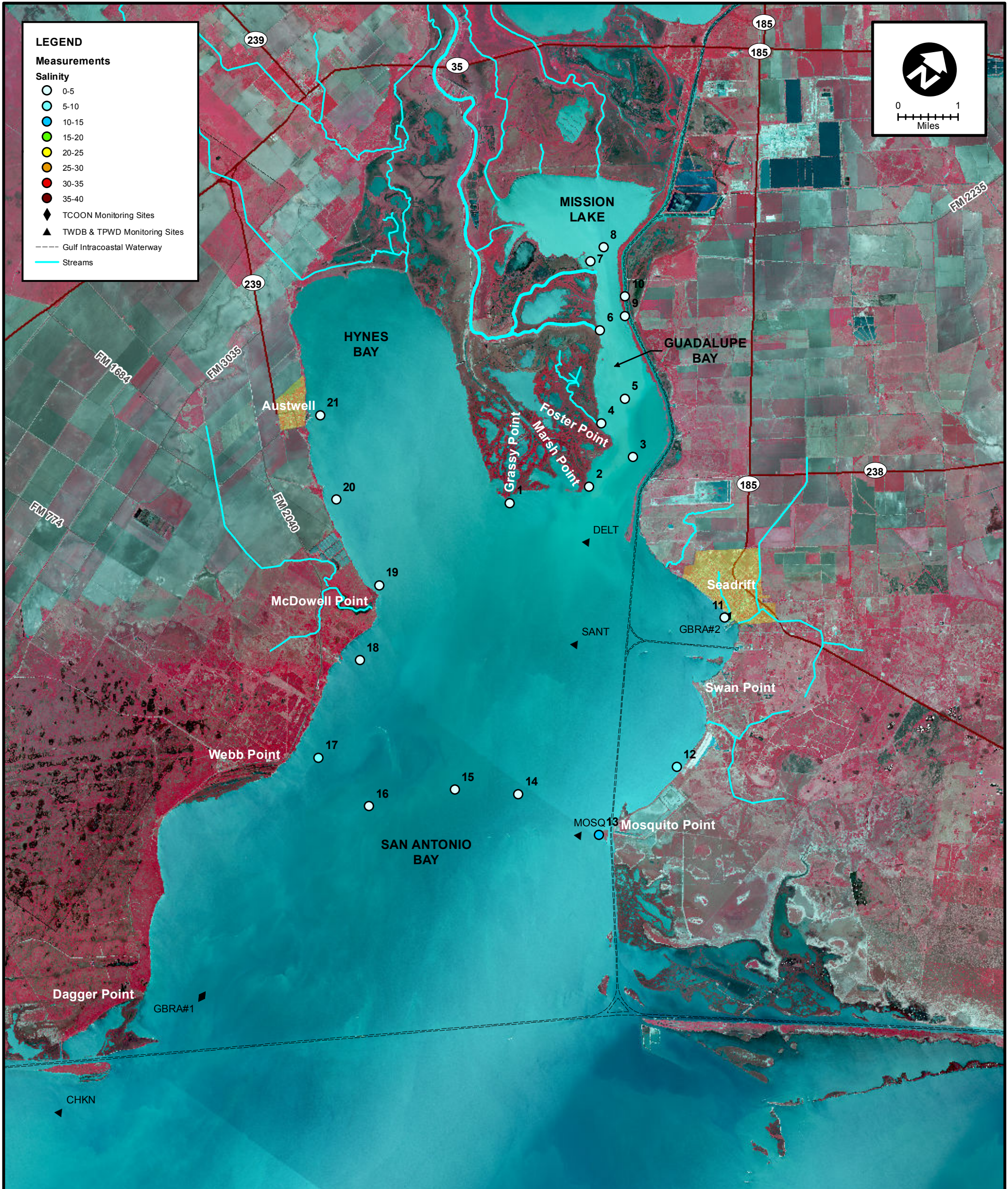
LEGEND

Measurements

Salinity

- 0-5
- 5-10
- 10-15
- 15-20
- 20-25
- 25-30
- 30-35
- 35-40

- ◆ TCOON Monitoring Sites
- ▲ TWDB & TPWD Monitoring Sites
- Gulf Intracoastal Waterway
- Streams



MEAS NO.	SITE DESCRIPTION	LATITUDE (N)	LONGITUDE (W)	TIME	TEMP (°C)	pH	DO (mg/L)	SC (µs)	SALINITY (PSU)	NOTES
1	Grassy Point	28 24 2.4	96 46 44.4	9:35	24.3				0.30	
2	Marsh Point	28 24 53.0	96 45 48.4	9:40	23.4				0.20	
3	Guadalupe Bay Pipe #1	28 25 35.8	96 45 28.7	9:43	23.9				0.20	
4	Redfish Bayou	28 25 44.8	96 46 13.4	9:47	23.3				0.20	
5	Guadalupe Bay Pipe #2	28 26 14.2	96 46 7.5	9:52	23.6				0.20	
6	Guadalupe Bay at South Fork	28 26 51.6	96 47 5.7	9:57	23.7				0.20	
7	Mission Lake Sonde	28 27 36.7	96 47 51.4	10:03	23.3				0.10	
8	Mission Lake	28 27 53.4	96 47 48.5	10:07	24.1				0.20	
9	Hurricane Pass	28 27 14.1	96 46 52.8	10:11	23.9				0.20	
10	Barge Canal above Hurricane Pass	28 27 28.3	96 47 3.8	10:18	24.3				1.50	
11	Seadrift	28 24 24.0	96 42 44.9	10:28	25.9				2.60	
12	Falcon Point	28 22 12.6	96 42 2.1	10:37	25.2				8.40	
13	Mosquito Point	28 20 45.5	96 42 28.5	10:53	24.9				10.30	
14	Mosquito Point to Webb Point (1/4 across)	28 20 35.5	96 43 57.1	10:58	24.8				2.30	
15	Mosquito Point to Webb Point (midpoint)	28 20 7.9	96 44 51.5	11:03	23.7				3.00	
16	Mosquito Point to Webb Point (3/4 across)	28 19 14.1	96 45 52.8	11:09	24.0				4.00	
17	Webb Point	28 19 24.6	96 47 0.7	11:13	24.8				5.80	
18	Hoppers Landing	28 20 55.5	96 47 20.8	11:19	25.2				4.00	
19	McDowell Point	28 21 59.1	96 47 46.1	11:26	24.7				3.90	
20	Hynes Bay between Austwell	28 22 40.4	96 49 8.4	11:31	24.9				4.40	
21	Austwell	28 23 33.5	96 50 8.2	11:36	25.1				4.30	



SALINITY MEASUREMENT DATA
SAN ANTONIO BAY

DATE: 04/24/2015
 FIELD CREW: DA, CH
 AVG. DAILY FLOW AT USGS TIVOLI GAUGE: 2,520 CFS