

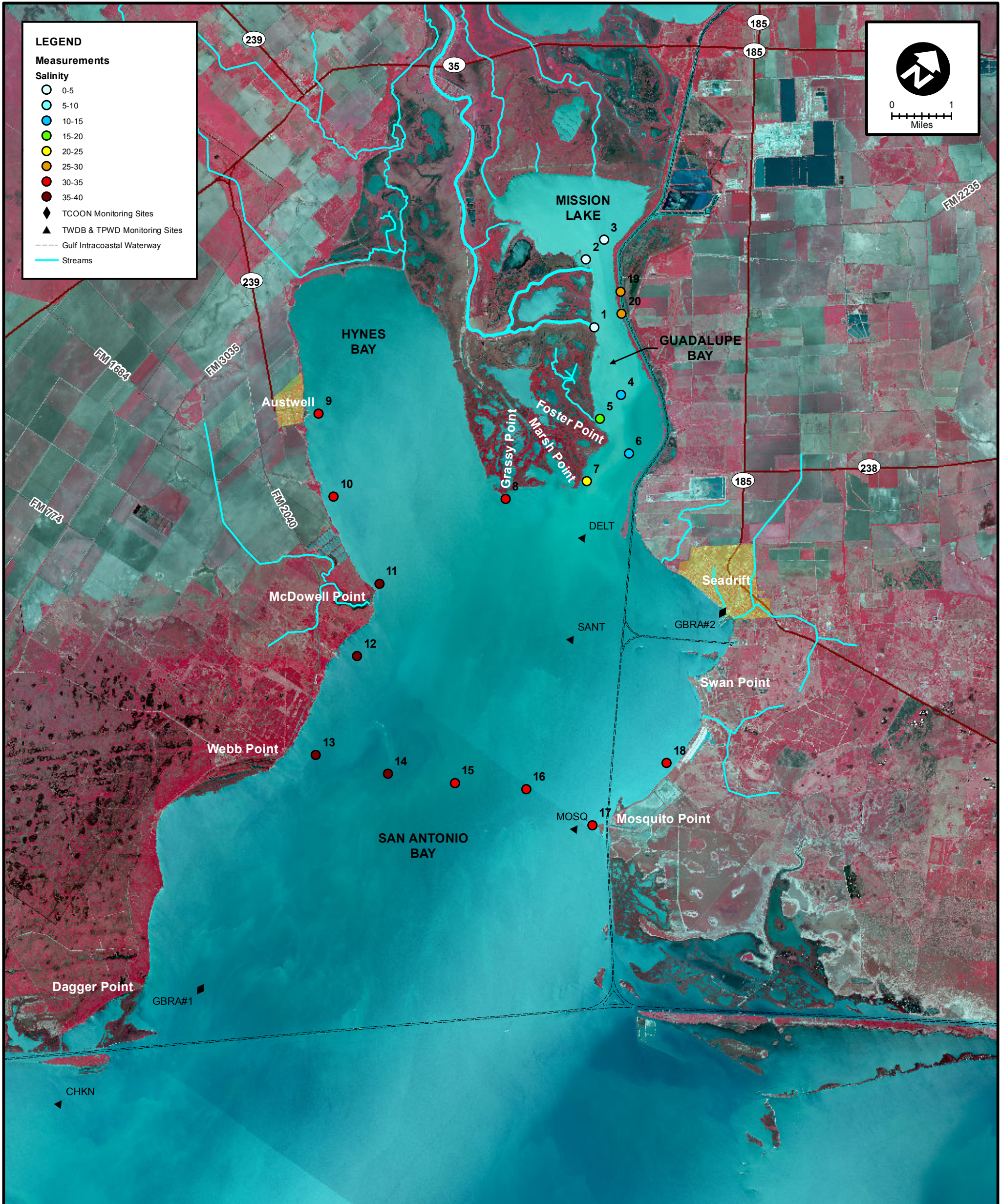
LEGEND

Measurements

Salinity

- 0-5
- 5-10
- 10-15
- 15-20
- 20-25
- 25-30
- 30-35
- 35-40

- ◆ TCOON Monitoring Sites
- ▲ TWDB & TPWD Monitoring Sites
- Gulf Intracoastal Waterway
- Streams



MEAS NO.	SITE DESCRIPTION	LATITUDE (N)		LONGITUDE (W)		TIME	TEMP (°C)	pH	DO (mg/L)	SC (µs)	SALINITY (PSU)	NOTES	
1	Guadalupe Bay at South Fork	28	26	96	47	7.3	11:58	12.8	7.2	80.5	0.72	West Wind 5-8, very low tide	
2	Guadalupe Bay @ Mission Lake Sonde	28	27	36.6	96	47	51.6	12:10	14.8	7.9	12.2		4.53
3	Guadalupe Bay at Mission Lake	28	27	59.9	96	47	47.8	13:03	14.4	8.3	13.3	3.34	
4	Guadalupe Bay at Pipe No. 2	28	26	14.9	96	46	7.7	13:16	14.8	8.2	13.7	12.62	
5	Guadalupe Bay at Redfish Bayou	28	25	47.0	96	46	11.8	13:36	15.9	8.5	19.3	17.81	
6	Guadalupe Bay at Pipe No. 1	28	25	36.0	96	45	28.5	13:44	14.9	8.6	14.4	11.93	
7	SA Bay at Marsh Point	28	24	55.1	96	45	47.9	13:49	15.3	8.6	16.7	20.63	
8	SA Bay at Grassy Point	28	24	2.2	96	46	44.9	13:58	14.9	8.6	10.4	33.95	
9	Hynes Bay at Austwell Ramp	28	23	32.9	96	50	6.7	14:08	15.9	8.6	10.4	33.76	
10	Hynes Bay between McDowell & Austwell	28	22	39.8	96	49	8.3	14:15	15.2	8.6	10.2	33.90	
11	Hynes Bay at McDowell Point	28	21	58.5	96	47	42.3	14:22	14.8	8.5	10.3	35.05	
12	SA Bay at Hoppers Landing	28	20	54.7	96	47	20.3	14:28	14.8	8.4	10.4	37.07	
13	SA Bay at Webb Point	28	19	22.4	96	46	59.6	14:35	17.7	8.2	10.8	39.58	
14	Mosquito Point to Webb Point (3/4 across)	28	19	43.8	96	45	49.8	14:40	13.5	8.5	11.2	38.35	
15	Mosquito Point to Webb Point (1/2 across)	28	20	10.1	96	44	49.2	14:46	14.0	8.7	14.3	34.17	
16	Mosquito Point to Webb Point (1/4 across)	28	20	40.6	96	43	47.1	14:51	14.3	8.6	13.4	32.73	
17	SA Bay at Mosquito Point	28	20	46.5	96	42	32.5	14:57	14.6	8.6	15.7	33.97	
18	SA Bay at Falcon Point	28	22	8.5	96	42	5.6	15:03	16.2	8.8	20.7	32.91	
19	Barge Canal above Hurricane Pass	28	27	30.2	96	47	5.4	15:21	14.3	8.4	11.7	26.63	
20	Hurricane Pass	28	27	14.4	96	46	51.9	15:25	13.9	8.3	11.8	27.09	



SALINITY MEASUREMENT DATA
SAN ANTONIO BAY

DATE: 01/27/2015
 FIELD CREW: DA
 AVG. DAILY FLOW AT USGS TIVOLI GAUGE: 1,820 CFS