

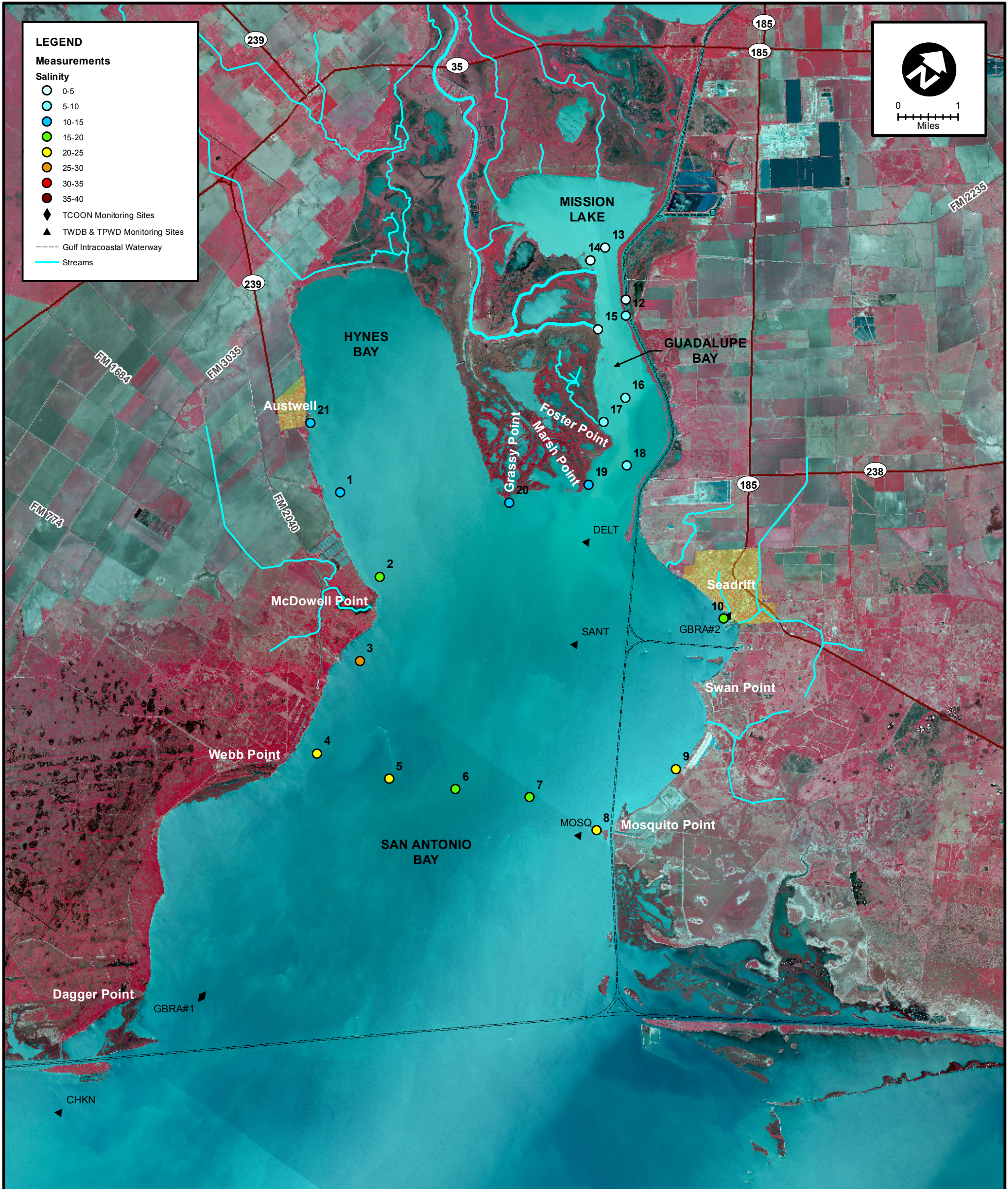
LEGEND

Measurements

Salinity

- 0-5
- 5-10
- 10-15
- 15-20
- 20-25
- 25-30
- 30-35
- 35-40

- ◆ TCOON Monitoring Sites
- ▲ TWDB & TPWD Monitoring Sites
- Gulf Intracoastal Waterway
- Streams



MEAS NO.	SITE DESCRIPTION	LATITUDE (N)		LONGITUDE (W)		TIME	TEMP (°C)	pH	DO (mg/L)	SC (µs)	SALINITY (ppt)	NOTES
1	Hynes Bay between McDowell Pt & Austwell	28	22	47.3	96	49	9.3	8:35	29.5		14.40	
2	SA Bay at McDowell Point	28	22	5.7	96	47	50.2	8:41	29.4		15.30	
3	SA Bay at Hoppers Landing	28	20	55.0	96	47	20.3	8:48	30.2		25.30	
4	SA Bay at Webb Point	28	19	27.0	96	47	4.2	9:45	28.9		24.20	
5	SA Bay Mosquito Point to Webb Point (3/4 across)	28	19	43.9	96	45	51.4	9:51	29.8		20.90	
6	SA Bay Mosquito Point to Webb Point (1/2 across)	28	20	8.6	96	44	51.3	9:55	29.7		18.90	
7	SA Bay Mosquito Point to Webb Point (1/4 across)	28	20	38.8	96	43	46.1	9:59	30.2		19.90	
8	SA Bay at Mosquito Point	28	20	47.5	96	42	33.1	10:03	30.1		22.00	
9	SA Bay at Falcon Point Lodge	28	22	10.6	96	42	1.7	10:53	29.9		24.20	
10	SA Bay at Seadrift	28	24	22.7	96	42	45.4	11:28	30.5		15.10	
11	Victoria Barge Canal	28	27	26.2	96	47	1.3	11:46	30.8		4.70	
12	Guadalupe Bay at Hurricane Pass	28	27	14.6	96	46	52.5	11:48	30.6		7.20	
13	Guadalupe Bay at Mission Lake	28	27	54.1	96	47	47.0	11:53	30.5		0.60	
14	Guadalupe Bay at Mission Lake Sonde Site	28	27	37.7	96	47	52.1	11:55	29.7		0.50	
15	Guadalupe Bay at South Fork	28	26	51.3	96	47	7.7	12:01	31.1		3.80	
16	Guadalupe Bay at Pipe No. 2	28	26	15.0	96	46	7.8	12:12	29.8		9.70	
17	Guadalupe Bay at Redfish Bayou	28	25	46.8	96	46	12.0	12:26	29.5		8.60	
18	Guadalupe Bay at Pipe No. 1	28	25	26.5	96	45	29.2	12:30	30.0		9.70	
19	Foster Point	28	24	54.1	96	45	50.1	12:36	30.0		10.70	
20	SA Bay at Grassy Point	28	24	2.5	96	46	45.0	12:43	31.5		11.20	
21	Hynes Bay at Austwell Pier	28	23	23.4	96	50	12.0	12:59	31.5		14.20	



SALINITY MEASUREMENT DATA
SAN ANTONIO BAY

DATE:	7/29/2014
FIELD CREW:	DA
AVG. DAILY FLOW AT USGS TIVOLI GAUGE:	422 CFS