

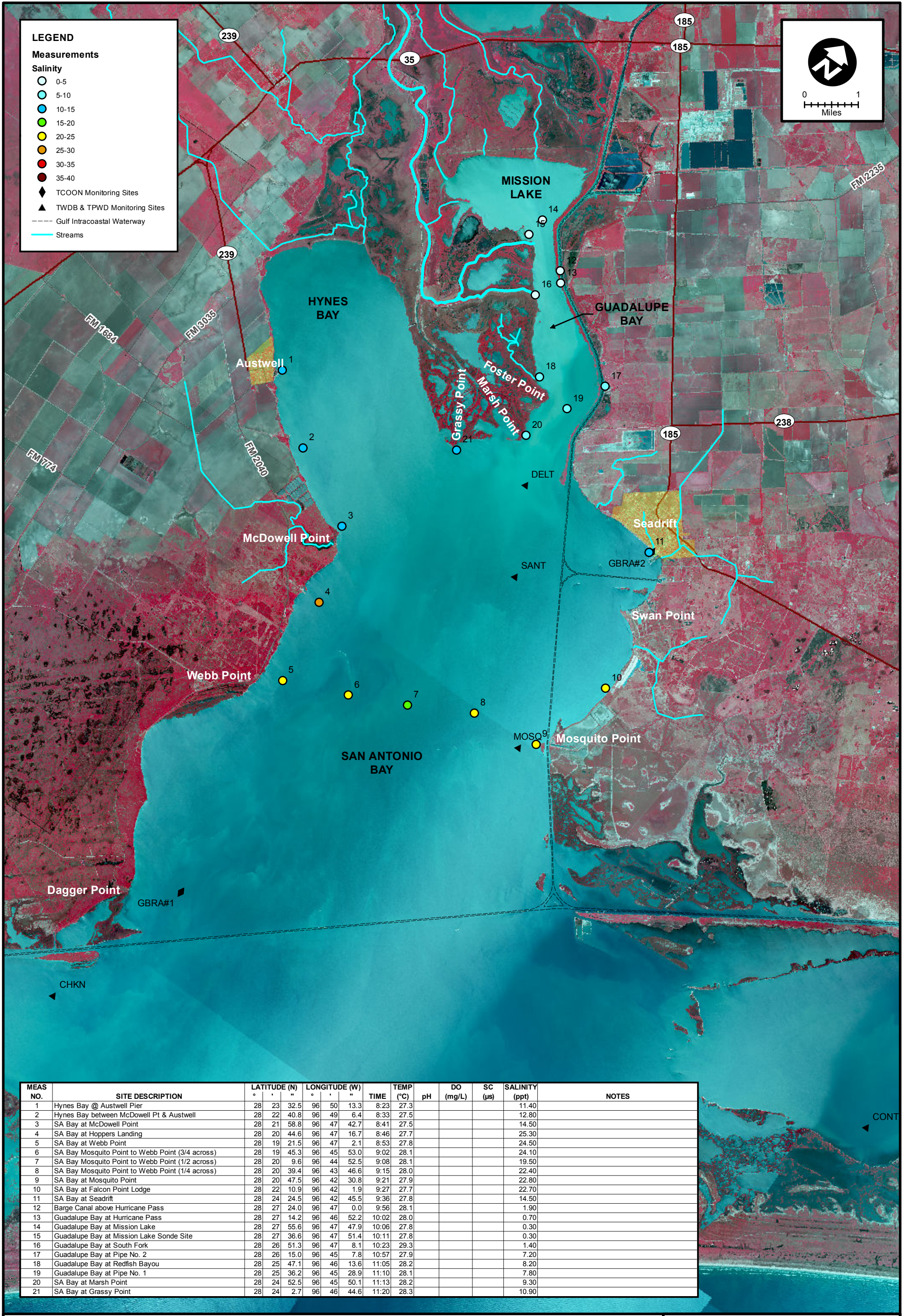
LEGEND

Measurements

Salinity

- 0-5
- 5-10
- 10-15
- 15-20
- 20-25
- 25-30
- 30-35
- 35-40

- ◆ TCOON Monitoring Sites
- ▲ TWDB & TPWD Monitoring Sites
- Gulf Intracoastal Waterway
- Streams



MEAS NO.	SITE DESCRIPTION	LATITUDE (N)	LONGITUDE (W)	TIME	TEMP (°C)	pH	DO (mg/L)	SC (µs)	SALINITY (ppt)	NOTES
1	Hynes Bay @ Austwell Pier	28 23 32.5	96 50 13.3	8:23	27.3				11.40	
2	Hynes Bay between McDowell Pt & Austwell	28 22 40.8	96 49 6.4	8:33	27.5				12.80	
3	SA Bay at McDowell Point	28 21 58.8	96 47 42.7	8:41	27.5				14.50	
4	SA Bay at Hoppers Landing	28 20 44.6	96 47 16.7	8:46	27.7				25.30	
5	SA Bay at Webb Point	28 19 21.5	96 47 2.1	8:53	27.8				24.50	
6	SA Bay Mosquito Point to Webb Point (3/4 across)	28 19 45.3	96 45 53.0	9:02	28.1				24.10	
7	SA Bay Mosquito Point to Webb Point (1/2 across)	28 20 9.6	96 44 52.5	9:08	28.1				19.50	
8	SA Bay Mosquito Point to Webb Point (1/4 across)	28 20 39.4	96 43 46.6	9:15	28.0				22.40	
9	SA Bay at Mosquito Point	28 20 47.5	96 42 30.8	9:21	27.9				22.80	
10	SA Bay at Falcon Point Lodge	28 22 10.9	96 42 1.9	9:27	27.7				22.70	
11	SA Bay at Seadrift	28 24 24.5	96 42 45.5	9:36	27.8				14.50	
12	Barge Canal above Hurricane Pass	28 27 24.0	96 47 0.0	9:56	28.1				1.90	
13	Guadalupe Bay at Hurricane Pass	28 27 14.2	96 46 52.2	10:02	28.0				0.70	
14	Guadalupe Bay at Mission Lake	28 27 55.6	96 47 47.9	10:06	27.8				0.30	
15	Guadalupe Bay at Mission Lake Sonde Site	28 27 36.6	96 47 51.4	10:11	27.8				0.30	
16	Guadalupe Bay at South Fork	28 26 51.3	96 47 8.1	10:23	29.3				1.40	
17	Guadalupe Bay at Pipe No. 2	28 26 15.0	96 45 7.8	10:57	27.9				7.20	
18	Guadalupe Bay at Redfish Bayou	28 25 47.1	96 46 13.6	11:05	28.2				8.20	
19	Guadalupe Bay at Pipe No. 1	28 25 36.2	96 45 28.9	11:10	28.1				7.80	
20	SA Bay at Marsh Point	28 24 52.5	96 45 50.1	11:13	28.2				9.30	
21	SA Bay at Grassy Point	28 24 2.7	96 46 44.6	11:20	28.3				10.90	



SALINITY MEASUREMENT DATA
SAN ANTONIO BAY

DATE: 6/23/2014

FIELD CREW: DA, CH, JM, JK

AVG. DAILY FLOW AT USGS TIVOLI GAUGE: 803 CFS