

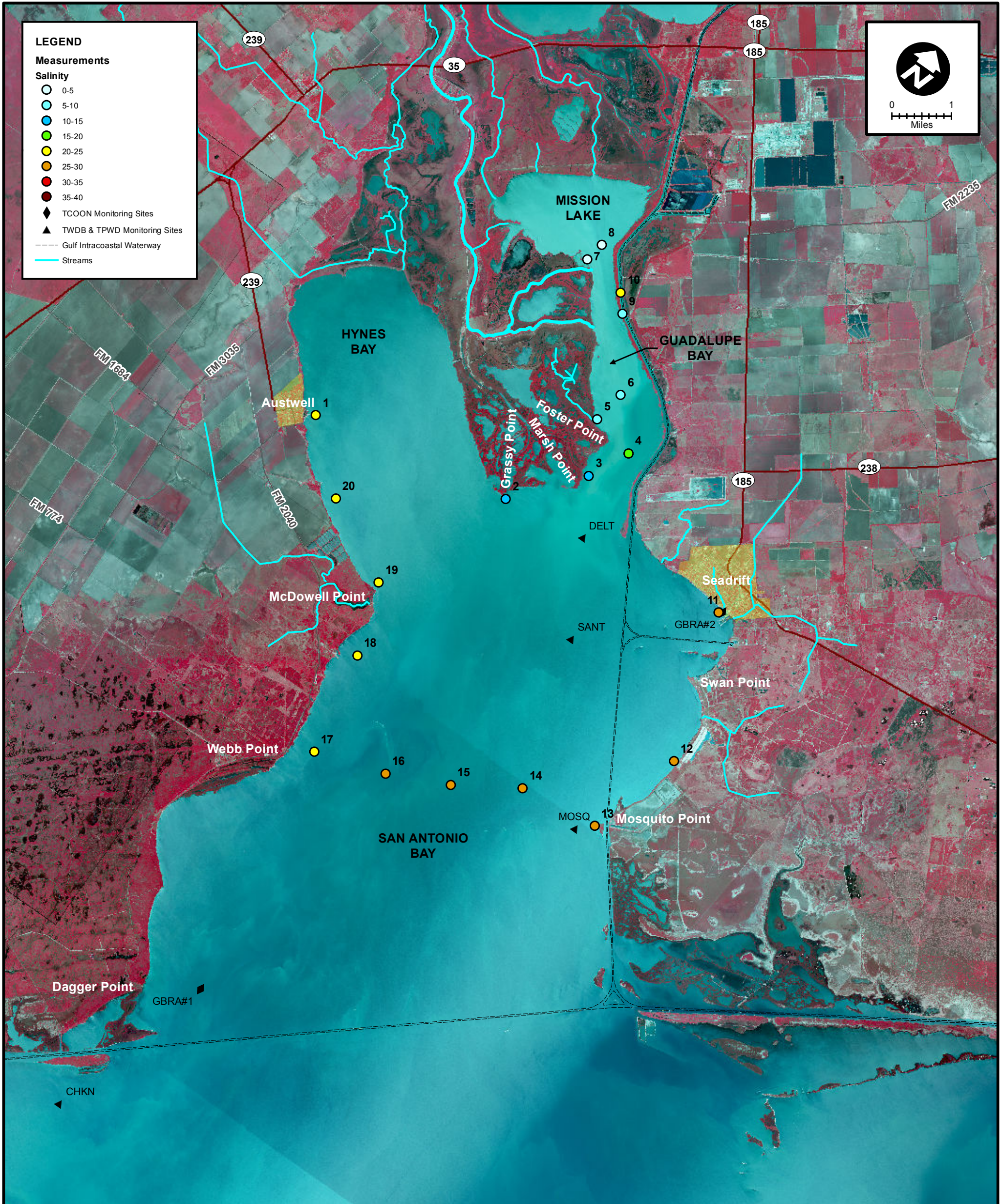
**LEGEND**

**Measurements**

**Salinity**

- 0-5
- 5-10
- 10-15
- 15-20
- 20-25
- 25-30
- 30-35
- 35-40

- ◆ TCOON Monitoring Sites
- ▲ TWDB & TPWD Monitoring Sites
- Gulf Intracoastal Waterway
- Streams



MEAS NO.	SITE DESCRIPTION	LATITUDE (N)	LONGITUDE (W)	TIME	TEMP (°C)	pH	DO (mg/L)	SC (µs)	SALINITY (ppt)	NOTES
1	Hynes Bay at Austwell Pier	28 23 30.4	96 50 8.3	7:40	19.1				24.00	
2	SA Bay at Grassy Point	28 24 2.3	96 46 44.9	7:47	19.0				12.70	
3	Foster Point	28 25 0.1	96 45 49.1	8:18	18.8				11.00	
4	Guadalupe Bay at Pipe No. 1	28 25 35.8	96 45 28.9	8:22	19.1				15.30	
5	Guadalupe Bay at Redfish Bayou	28 25 45.6	96 46 13.6	8:26	18.2				8.70	
6	Guadalupe Bay at Pipe No. 2	28 26 14.8	96 46 7.8	8:30	18.2				8.80	
7	Guadalupe Bay @ Sonde Site (near Mission Lake)	28 27 37.3	96 47 50.8	9:02	20.1				3.50	
8	Guadalupe Bay at Mission Lake Mouth	28 27 55.0	96 47 46.8	9:04	18.4				4.60	
9	Guadalupe Bay at Hurricane Pass	28 27 14.7	96 46 51.4	9:10	19.5				9.90	
10	Barge Canal above Hurricane Pass	28 27 29.6	96 47 4.7	9:13	22.2				20.80	APPROXIMATE LOCATION
11	SA Bay at Seadrift	28 24 23.9	96 42 46.0	9:29	21.9				26.50	
12	SA Bay at Falcon Point Lodge	28 22 13.4	96 42 0.6	9:39	20.0				28.50	
13	SA Bay at Mosquito Point	28 20 47.3	96 42 30.1	9:44	21.1				27.60	
14	SA Bay Mosquito Point to Webb Point (1/4 across)	28 20 39.4	96 43 50.5	9:46	22.2				26.10	APPROXIMATE LOCATION
15	SA Bay Mosquito Point to Webb Point (1/2 across)	28 20 6.7	96 44 51.8	11:01	22.3				26.10	APPROXIMATE LOCATION
16	SA Bay Mosquito Point to Webb Point (3/4 across)	28 19 42.8	96 45 51.8	11:05	21.9				25.70	
17	SA Bay at Webb Point	28 19 23.8	96 47 2.7	11:11	21.4				23.70	
18	SA Bay at Hoppers Landing	28 20 55.3	96 47 20.4	11:20	21.1				23.70	
19	SA Bay at McDowell Point	28 21 59.1	96 47 43.4	12:01	21.8				22.60	
20	Hynes Bay between McDowell & Austwell	28 22 39.4	96 49 5.5	12:11	21.6				21.60	



**SALINITY MEASUREMENT DATA**  
SAN ANTONIO BAY

DATE:	5/15/2014
FIELD CREW:	DA, LS
AVG. DAILY FLOW AT USGS TIVOLI GAUGE:	729 CFS