

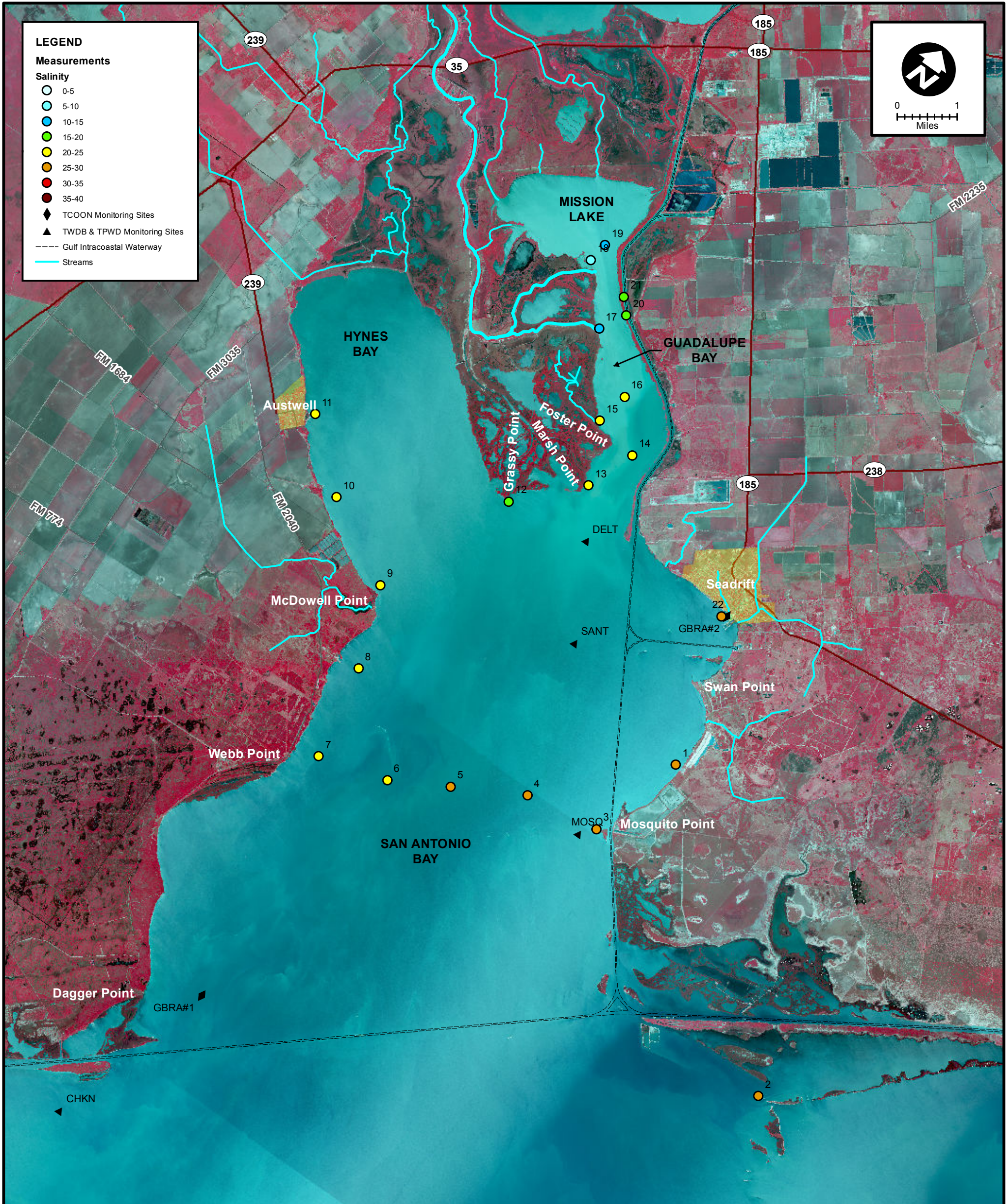
**LEGEND**

**Measurements**

**Salinity**

- 0-5
- 5-10
- 10-15
- 15-20
- 20-25
- 25-30
- 30-35
- 35-40

- ◆ TCOON Monitoring Sites
- ▲ TWDB & TPWD Monitoring Sites
- Gulf Intracoastal Waterway
- Streams



MEAS NO.	SITE DESCRIPTION	LATITUDE (N)	LONGITUDE (W)	TIME	TEMP (°C)	pH	DO (mg/L)	SC (µs)	SALINITY (ppt)	NOTES
1	SA Bay at Falcon Point Lodge	28 22 13.3	96 42 3.1	9:27	19.7				26.30	
2	SA Bay at Steamboat Pass	28 18 53.2	96 37 53.0	10:03	19.8				29.60	
3	SA Bay at Mosquito Point	28 20 48.0	96 42 32.6	10:23	20.2				27.90	
4	SA Bay between Mosquito Pt. and Webb Pt. (1/4 across)	28 20 38.8	96 43 48.0	10:29	19.9				27.60	
5	SA Bay between Mosquito Pt. and Webb Pt. (midpoint)	28 20 7.7	96 44 55.9	10:35	20.1				26.00	
6	SA Bay between Mosquito Pt. and Webb Pt. (3/4 across)	28 19 41.6	96 45 51.4	10:42	20.3				22.60	
7	SA Bay at Webb Point	28 19 25.4	96 47 0.7	10:48	20.3				23.10	
8	SA Bay at Hoppers Landing	28 20 48.5	96 47 16.5	10:53	20.1				23.90	
9	SA Bay at McDowell Point	28 21 59.7	96 47 44.4	11:00	20.0				23.00	
10	Hynes Bay between McDowell & Austwell	28 22 42.0	96 49 9.1	11:05	20.2				20.60	
11	Hynes Bay at Austwell Pier	28 23 31.8	96 50 12.3	12:00	20.2				20.80	
12	SA Bay at Grassy Point	28 24 2.7	96 46 45.3	11:28	20.4				19.80	
13	SA Bay at Marsh Point	28 24 53.5	96 45 48.9	11:34	20.8				20.60	
14	Guadalupe Bay at Pipe No. 1	28 25 36.6	96 45 29.4	11:38	20.5				22.30	
15	Guadalupe Bay at Redfish Bayou	28 25 45.9	96 46 15.1	11:42	20.6				21.30	
16	Guadalupe Bay at Pipe No. 2	28 26 15.3	96 46 8.0	11:47	20.8				20.70	
17	Guadalupe Bay at South Fork	28 26 52.4	96 47 6.6	11:51	20.9				14.70	
18	Guadalupe Bay at Mission Lake Sonde	28 27 38.2	96 47 51.2	12:31	21.3				9.50	
19	Guadalupe Bay at Mission Lake Mouth	28 27 55.8	96 47 47.7	12:33	21.2				10.90	
20	Guadalupe Bay at Hurricane Pass	28 27 15.1	96 46 51.6	12:40	21.4				17.40	
21	Barge Canal above Hurricane Pass	28 27 27.6	96 47 3.6	12:42	21.4				16.90	
22	SA Bay at Seadrift	28 24 23.3	96 42 47.2	13:01	21.6				26.30	



**SALINITY MEASUREMENT DATA**  
SAN ANTONIO BAY

DATE:	3/31/2014
FIELD CREW:	DA, CH
AVG. DAILY FLOW AT USGS TIVOLI SH 35:	503 CFS