

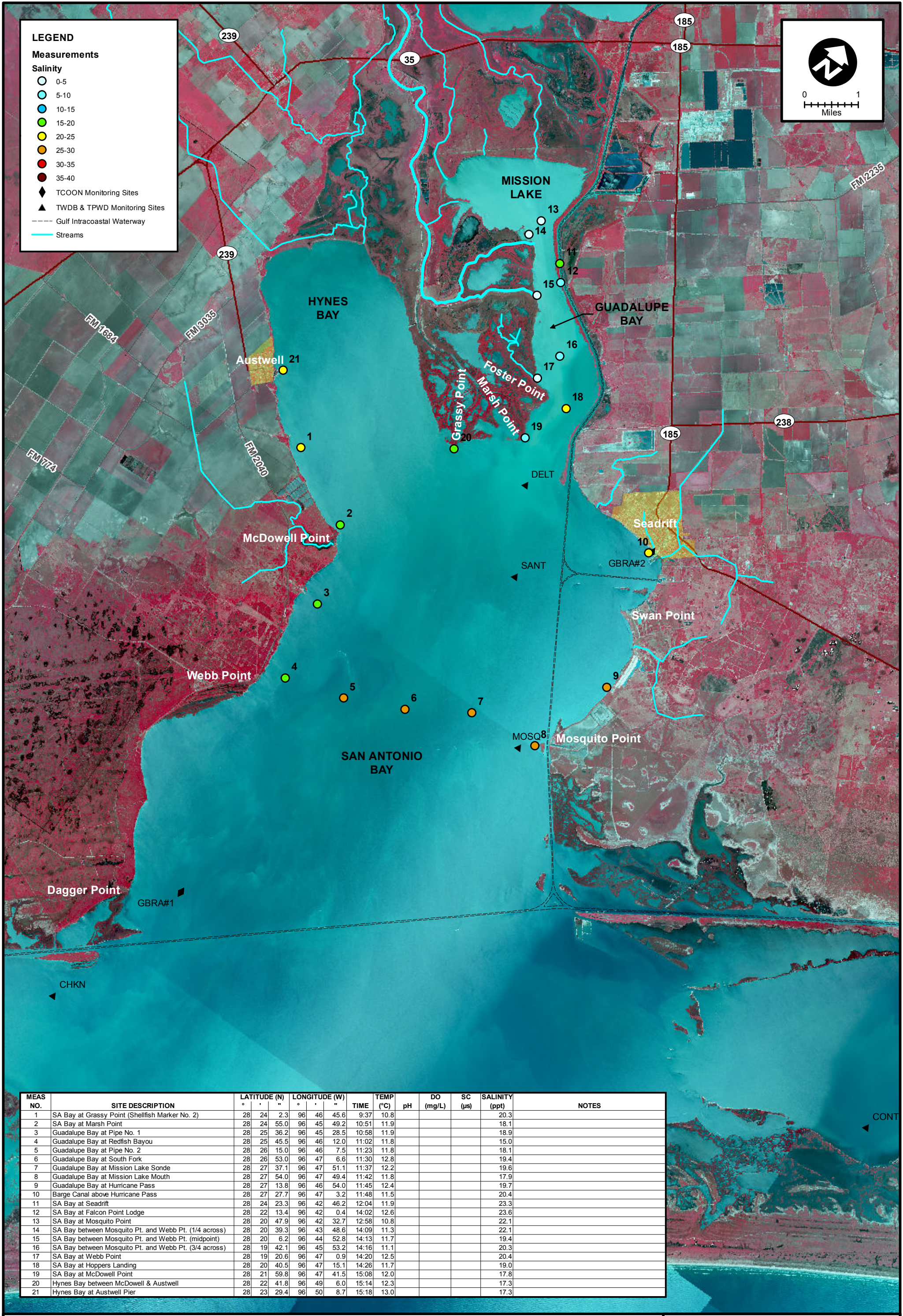
LEGEND

Measurements

Salinity

- 0-5
- 5-10
- 10-15
- 15-20
- 20-25
- 25-30
- 30-35
- 35-40

- ◆ TCOON Monitoring Sites
- ▲ TWDB & TPWD Monitoring Sites
- Gulf Intracoastal Waterway
- Streams



MEAS NO.	SITE DESCRIPTION	LATITUDE (N)	LONGITUDE (W)	TIME	TEMP (°C)	pH	DO (mg/L)	SC (µs)	SALINITY (ppt)	NOTES
1	SA Bay at Grassy Point (Shellfish Marker No. 2)	28 24 2.3	96 46 45.6	9:37	10.8				20.3	
2	SA Bay at Marsh Point	28 24 55.0	96 45 49.2	10:51	11.9				18.1	
3	Guadalupe Bay at Pipe No. 1	28 25 36.2	96 45 28.5	10:58	11.9				18.9	
4	Guadalupe Bay at Redfish Bayou	28 25 45.5	96 46 12.0	11:02	11.8				15.0	
5	Guadalupe Bay at Pipe No. 2	28 26 15.0	96 46 7.5	11:23	11.8				18.1	
6	Guadalupe Bay at South Fork	28 26 53.0	96 47 6.6	11:30	12.8				19.4	
7	Guadalupe Bay at Mission Lake Sonde	28 27 37.1	96 47 51.1	11:37	12.2				19.6	
8	Guadalupe Bay at Mission Lake Mouth	28 27 54.0	96 47 49.4	11:42	11.8				17.9	
9	Guadalupe Bay at Hurricane Pass	28 27 13.8	96 46 54.0	11:45	12.4				19.7	
10	Barge Canal above Hurricane Pass	28 27 27.7	96 47 3.2	11:48	11.5				20.4	
11	SA Bay at Seadrift	28 24 23.3	96 42 46.2	12:04	11.9				23.3	
12	SA Bay at Falcon Point Lodge	28 22 13.4	96 42 0.4	14:02	12.6				23.6	
13	SA Bay at Mosquito Point	28 20 47.9	96 42 32.7	12:58	10.8				22.1	
14	SA Bay between Mosquito Pt. and Webb Pt. (1/4 across)	28 20 39.3	96 43 48.6	14:09	11.3				22.1	
15	SA Bay between Mosquito Pt. and Webb Pt. (midpoint)	28 20 6.2	96 44 52.8	14:13	11.7				19.4	
16	SA Bay between Mosquito Pt. and Webb Pt. (3/4 across)	28 19 42.1	96 45 53.2	14:16	11.1				20.3	
17	SA Bay at Webb Point	28 19 20.6	96 47 0.9	14:20	12.5				20.4	
18	SA Bay at Hoppers Landing	28 20 40.5	96 47 15.1	14:26	11.7				19.0	
19	SA Bay at McDowell Point	28 21 59.8	96 47 41.5	15:08	12.0				17.8	
20	Hynes Bay between McDowell & Austwell	28 22 41.8	96 49 6.0	15:14	12.3				17.3	
21	Hynes Bay at Austwell Pier	28 23 29.4	96 50 8.7	15:18	13.0				17.3	



SALINITY MEASUREMENT DATA
SAN ANTONIO BAY

DATE:	12/16/2013
FIELD CREW:	DA, LS
AVG. DAILY FLOW AT USGS TIVOLI SH 35:	717 CFS