

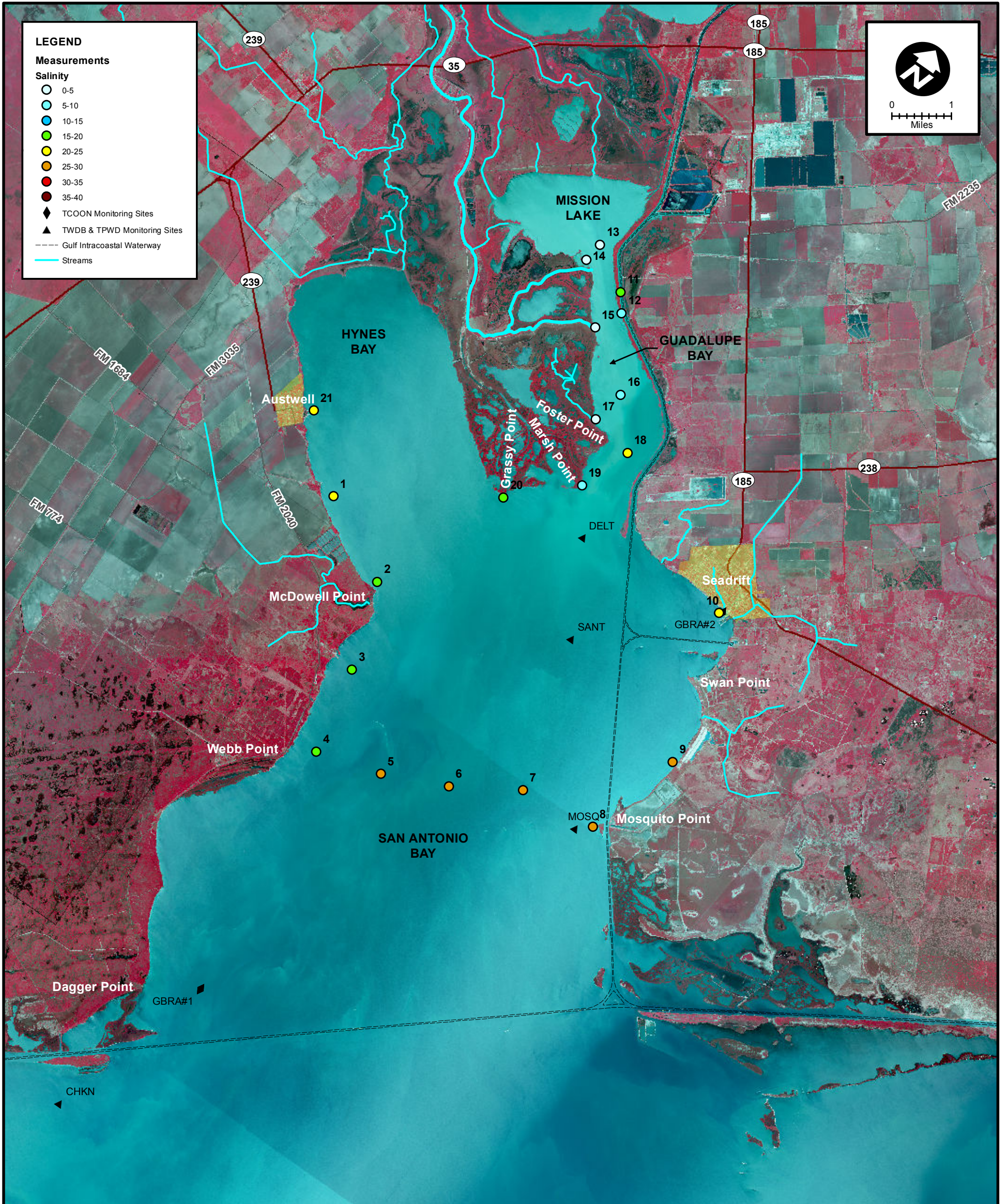
**LEGEND**

**Measurements**

**Salinity**

- 0-5
- 5-10
- 10-15
- 15-20
- 20-25
- 25-30
- 30-35
- 35-40

- ◆ TCOON Monitoring Sites
- ▲ TWDB & TPWD Monitoring Sites
- Gulf Intracoastal Waterway
- Streams



MEAS NO.	SITE DESCRIPTION	LATITUDE (N)	LONGITUDE (W)	TIME	TEMP (°C)	pH	DO (mg/L)	SC (µs)	SALINITY (ppt)	NOTES
1	SA Bay at Grassy Point (Shellfish Marker No. 2)	28 24 2.8	96 46 47.3	13:00	14.7				11.1	
2	SA Bay at Marsh Point	28 24 48.8	96 45 49.1	13:11	15.4				7.7	
3	Guadalupe Bay at Pipe No. 1	28 25 35.9	96 45 30.9	13:15	15.1				20.4	
4	Guadalupe Bay at Redfish Bayou	28 25 44.1	96 46 12.6	13:21	15.1				3.3	
5	Guadalupe Bay at Pipe No. 2	28 26 15.0	96 46 7.9	14:00	15.3				12.2	
6	Guadalupe Bay at South Fork	28 26 52.6	96 47 7.1	14:04	16.7				0.1	
7	Guadalupe Bay at Mission Lake Sonde	28 27 36.6	96 47 51.4	14:34	16.4				0.8	
8	Guadalupe Bay at Mission Lake Mouth	28 27 49.9	96 47 48.2	14:43	15.7				0.9	
9	Guadalupe Bay at Hurricane pass	28 27 14.7	96 46 51.9	14:50	15.9				2.9	
10	Barge Canal above Hurricane Pass	28 27 27.9	96 47 2.5	14:52	16.4				20.5	
11	SA Bay at Seadrift	28 24 23.9	96 42 45.6	15:07	16.0				26.5	
12	SA Bay at Falcon Point Lodge	28 22 13.5	96 42 0.4	15:30	15.4				27.1	
13	SA Bay at Mosquito Point	28 20 45.9	96 42 31.4	15:38	16.1				28.5	
14	SA Bay between Mosquito Pt. and Webb Pt. (1/4 across)	28 20 39.3	96 43 48.6	15:45	15.0				26.5	
15	SA Bay between Mosquito Pt. and Webb Pt. (midpoint)	28 20 6.2	96 44 52.8	15:48	15.4				26.5	
16	SA Bay between Mosquito Pt. and Webb Pt. (3/4 across)	28 19 42.1	96 45 53.2	15:54	15.4				22.2	
17	SA Bay at Webb Point	28 19 23.6	96 47 0.3	16:40	15.5				19.1	
18	SA Bay at Hoppers Landing	28 20 44.4	96 47 16.8	16:45	15.6				19.1	
19	SA Bay at McDowell Point	28 21 54.7	96 47 41.0	16:54	15.3				18.1	
20	Hynes Bay between McDowell & Austwell	28 22 40.6	96 49 7.5	17:00	14.9				15.9	
21	Hynes Bay at Austwell Pier	28 23 30.6	96 50 7.8	17:05	14.7				16.0	



**SALINITY MEASUREMENT DATA**  
SAN ANTONIO BAY

DATE: 11/14/2013

FIELD CREW: DA, CH

AVG. DAILY FLOW AT USGS TIVOLI GAUGE: 2,140 CFS