

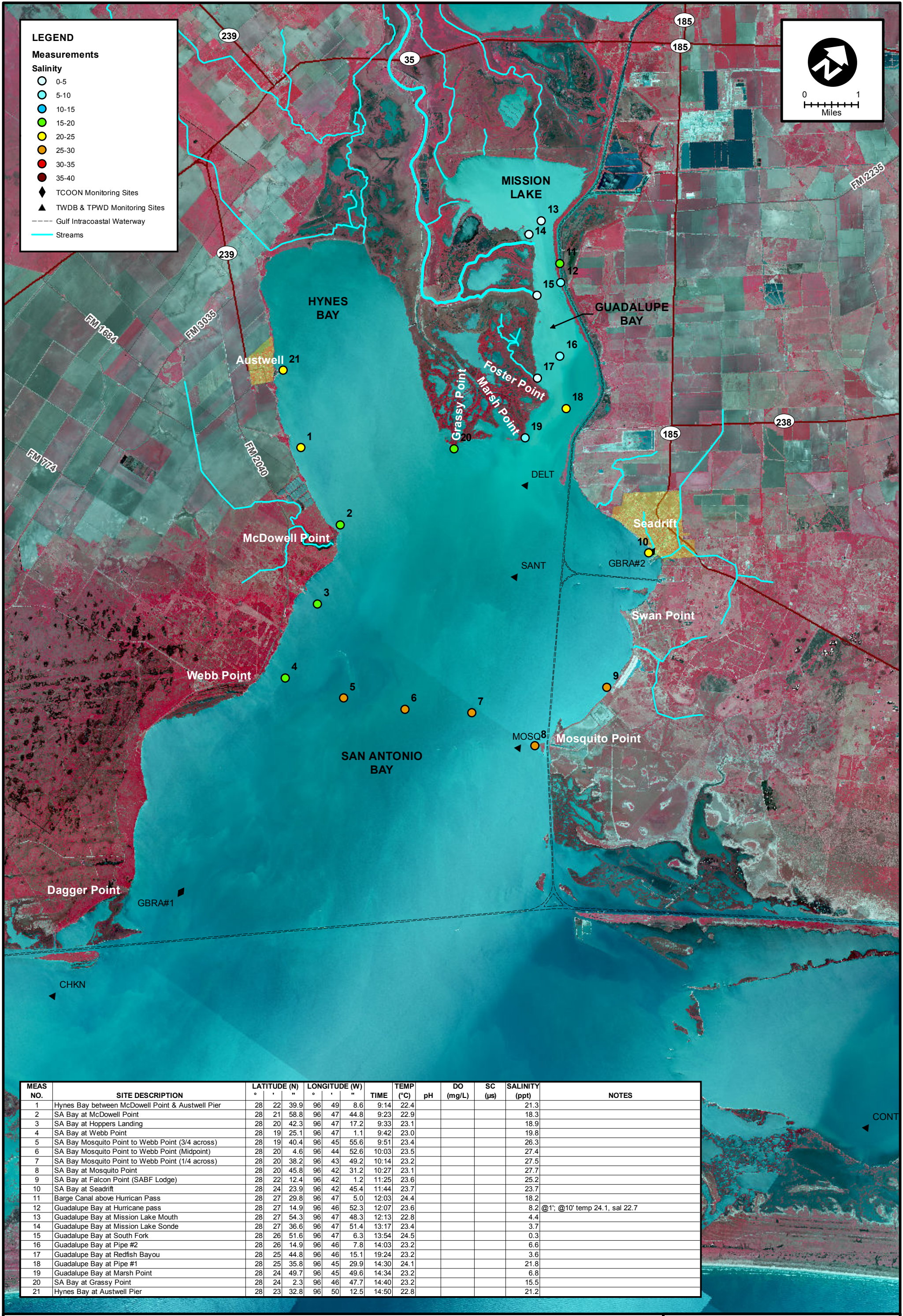
**LEGEND**

**Measurements**

**Salinity**

- 0-5
- 5-10
- 10-15
- 15-20
- 20-25
- 25-30
- 30-35
- 35-40

- ◆ TCOON Monitoring Sites
- ▲ TWDB & TPWD Monitoring Sites
- Gulf Intracoastal Waterway
- Streams



MEAS NO.	SITE DESCRIPTION	LATITUDE (N)	LONGITUDE (W)	TIME	TEMP (°C)	pH	DO (mg/L)	SC (µs)	SALINITY (ppt)	NOTES
1	Hynes Bay between McDowell Point & Austwell Pier	28 22 39.9	96 49 8.6	9:14	22.4				21.3	
2	SA Bay at McDowell Point	28 21 58.8	96 47 44.8	9:23	22.9				18.3	
3	SA Bay at Hoppers Landing	28 20 42.3	96 47 17.2	9:33	23.1				18.9	
4	SA Bay at Webb Point	28 19 25.1	96 47 1.1	9:42	23.0				19.8	
5	SA Bay Mosquito Point to Webb Point (3/4 across)	28 19 40.4	96 45 55.6	9:51	23.4				26.3	
6	SA Bay Mosquito Point to Webb Point (Midpoint)	28 20 4.6	96 44 52.6	10:03	23.5				27.4	
7	SA Bay Mosquito Point to Webb Point (1/4 across)	28 20 38.2	96 43 49.2	10:14	23.2				27.5	
8	SA Bay at Mosquito Point	28 20 45.8	96 42 31.2	10:27	23.1				27.7	
9	SA Bay at Falcon Point (SABF Lodge)	28 22 12.4	96 42 1.2	11:25	23.6				25.2	
10	SA Bay at Seadrift	28 24 23.9	96 42 45.4	11:44	23.7				23.7	
11	Barge Canal above Hurrican Pass	28 27 29.8	96 47 5.0	12:03	24.4				18.2	
12	Guadalupe Bay at Hurricane pass	28 27 14.9	96 46 52.3	12:07	23.6				8.2	@1'; @10' temp 24.1, sal 22.7
13	Guadalupe Bay at Mission Lake Mouth	28 27 54.3	96 47 48.3	12:13	22.8				4.4	
14	Guadalupe Bay at Mission Lake Sonde	28 27 36.6	96 47 51.4	13:17	23.4				3.7	
15	Guadalupe Bay at South Fork	28 26 51.6	96 47 6.3	13:54	24.5				0.3	
16	Guadalupe Bay at Pipe #2	28 26 14.9	96 46 7.8	14:03	23.2				6.6	
17	Guadalupe Bay at Redfish Bayou	28 25 44.8	96 46 15.1	19:24	23.2				3.6	
18	Guadalupe Bay at Pipe #1	28 25 35.8	96 45 29.9	14:30	24.1				21.8	
19	Guadalupe Bay at Marsh Point	28 24 49.7	96 45 49.6	14:34	23.2				6.8	
20	SA Bay at Grassy Point	28 24 2.3	96 46 47.7	14:40	23.2				15.5	
21	Hynes Bay at Austwell Pier	28 23 32.8	96 50 12.5	14:50	22.8				21.2	



**SALINITY MEASUREMENT DATA**  
SAN ANTONIO BAY

DATE: 10/18/2013

FIELD CREW: DA, CH

AVG. DAILY FLOW AT USGS TIVOLI GAUGE: 1,970 CFS