

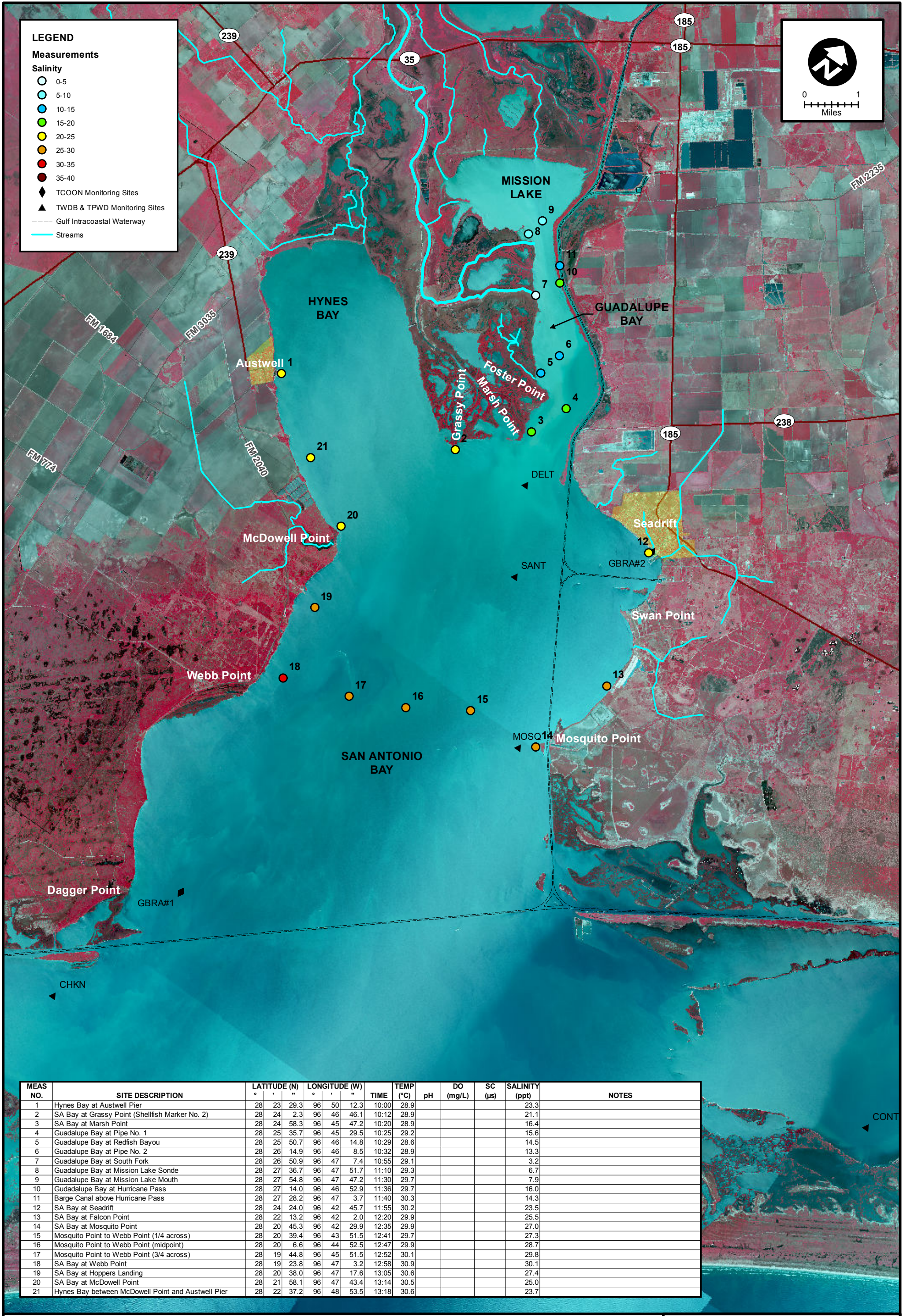
LEGEND

Measurements

Salinity

- 0-5
- 5-10
- 10-15
- 15-20
- 20-25
- 25-30
- 30-35
- 35-40

- ◆ TCOON Monitoring Sites
- ▲ TWDB & TPWD Monitoring Sites
- Gulf Intracoastal Waterway
- Streams



MEAS NO.	SITE DESCRIPTION	LATITUDE (N)	LONGITUDE (W)	TIME	TEMP (°C)	pH	DO (mg/L)	SC (µs)	SALINITY (ppt)	NOTES
1	Hynes Bay at Austwell Pier	28 23 29.3	96 50 12.3	10:00	28.9				23.3	
2	SA Bay at Grassy Point (Shellfish Marker No. 2)	28 24 2.3	96 46 46.1	10:12	28.9				21.1	
3	SA Bay at Marsh Point	28 24 58.3	96 45 47.2	10:20	28.9				16.4	
4	Guadalupe Bay at Pipe No. 1	28 25 35.7	96 45 29.5	10:25	29.2				15.6	
5	Guadalupe Bay at Redfish Bayou	28 25 50.7	96 46 14.8	10:29	28.6				14.5	
6	Guadalupe Bay at Pipe No. 2	28 26 14.9	96 46 8.5	10:32	28.9				13.3	
7	Guadalupe Bay at South Fork	28 26 50.9	96 47 7.4	10:55	29.1				3.2	
8	Guadalupe Bay at Mission Lake Sonde	28 27 36.7	96 47 51.7	11:10	29.3				6.7	
9	Guadalupe Bay at Mission Lake Mouth	28 27 54.8	96 47 47.2	11:30	29.7				7.9	
10	Guadalupe Bay at Hurricane Pass	28 27 14.0	96 46 52.9	11:36	29.7				16.0	
11	Barge Canal above Hurricane Pass	28 27 28.2	96 47 3.7	11:40	30.3				14.3	
12	SA Bay at Seadrift	28 24 24.0	96 42 45.7	11:55	30.2				23.5	
13	SA Bay at Falcon Point	28 22 13.2	96 42 2.0	12:20	29.9				25.5	
14	SA Bay at Mosquito Point	28 20 45.3	96 42 29.9	12:35	29.9				27.0	
15	Mosquito Point to Webb Point (1/4 across)	28 20 39.4	96 43 51.5	12:41	29.7				27.3	
16	Mosquito Point to Webb Point (midpoint)	28 20 6.6	96 44 52.5	12:47	29.9				28.7	
17	Mosquito Point to Webb Point (3/4 across)	28 19 44.8	96 45 51.5	12:52	30.1				29.8	
18	SA Bay at Webb Point	28 19 23.8	96 47 3.2	12:58	30.9				30.1	
19	SA Bay at Hoppers Landing	28 20 38.0	96 47 17.6	13:05	30.6				27.4	
20	SA Bay at McDowell Point	28 21 58.1	96 47 43.4	13:14	30.5				25.0	
21	Hynes Bay between McDowell Point and Austwell Pier	28 22 37.2	96 48 53.5	13:18	30.6				23.7	



SALINITY MEASUREMENT DATA
SAN ANTONIO BAY

DATE:	8/23/2013
FIELD CREW:	DA, CH, MU
AVG. DAILY FLOW AT USGS TIVOLI GAUGE:	347 CFS