

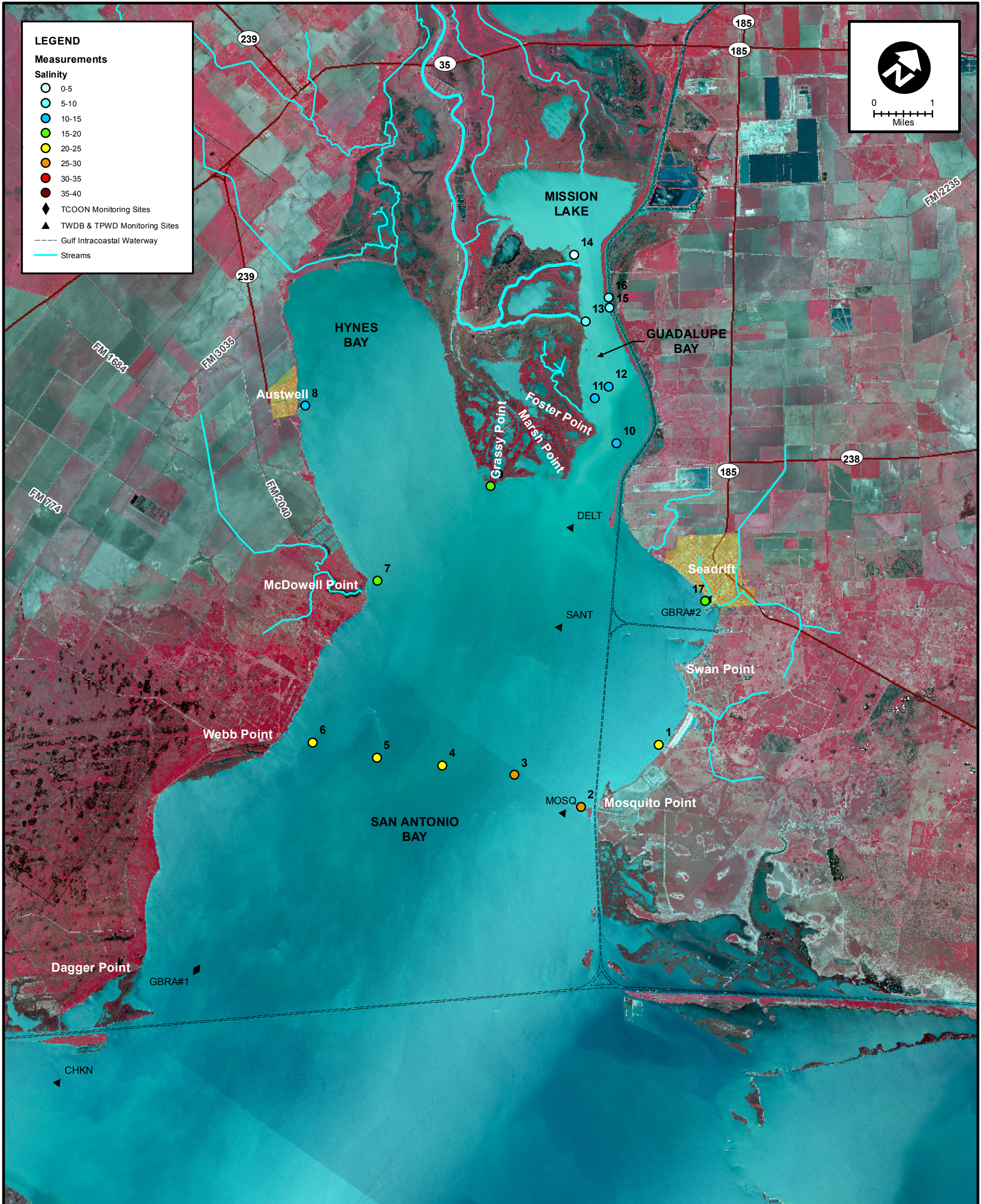
**LEGEND**

**Measurements**

**Salinity**

- 0-5
- 5-10
- 10-15
- 15-20
- 20-25
- 25-30
- 30-35
- 35-40

- ◆ TCOON Monitoring Sites
- ▲ TWDB & TPWD Monitoring Sites
- Gulf Intracoastal Waterway
- Streams



MEAS NO.	SITE DESCRIPTION	LATITUDE (N)	LONGITUDE (W)	TIME	TEMP (°C)	pH	DO (mg/L)	SC (µs)	SALINITY (ppt)	NOTES
1	SA Bay at Falcon Point (SABF Lodge)	28 22 13.8	96 42 2.8		29.6				22.0	
2	SA Bay at Mosquito Point	28 20 48.6	96 42 33.3		29.6				28.2	
3	SA Bay Mosquito Point to Webb Point (1/4 across)	28 20 39.1	96 43 47.5		29.6				25.4	
4	SA Bay Mosquito Point to Webb Point (midpoint)	28 20 10.0	96 44 53.4		29.7				22.2	
5	SA Bay Mosquito Point to Webb Point (3/4 across)	28 19 43.1	96 45 53.1		29.8				23.1	
6	SA Bay at Webb Point	28 19 22.3	96 46 55.6	10:37	30.1				23.0	
7	SA Bay at McDowell Point	28 21 55.2	96 47 32.5	10:50	30.0				19.5	
8	Hynes Bay at Austwell Pier	28 23 29.4	96 50 12.8	11:20	30.1				13.5	
9	SA Bay at Grassy Point (Shellfish Marker No. 2)	28 24 2.1	96 46 50.9	11:37	29.6				16.6	
10	Guadalupe Bay at Pipe # 1	28 25 37.0	96 45 29.0	11:51	29.9				14.7	
11	Guadalupe Bay at Redfish Bayou	28 25 59.8	96 46 12.9	11:57	29.7				14.3	
12	Guadalupe Bay at Pipe # 2	28 26 15.3	96 46 7.9	12:17	30.0				14.2	
13	Guadalupe Bay at South Fork	28 26 52.5	96 47 4.2	12:27	30.5				6.3	
14	Guadalupe Bay at Mission Lake Mouth	28 27 36.5	96 47 51.5	12:55	31.1				4.6	
15	Guadalupe Bay at Hurricane Pass	28 27 14.8	96 46 51.7	13:07	30.9				6.9	
16	Barge Canal above Hurricane Pass	28 27 21.6	96 46 58.2	13:11	30.8				7.1	
17	SA Bay at Seadrift (TCOON GBRA 02)	28 24 24.0	96 42 45.1	13:31	31.1				17.4	



**SALINITY MEASUREMENT DATA**  
SAN ANTONIO BAY

DATE:	7/09/2013
FIELD CREW:	DA, CH, LS
AVG. DAILY FLOW AT USGS TIVOLI GAUGE:	496 CFS