

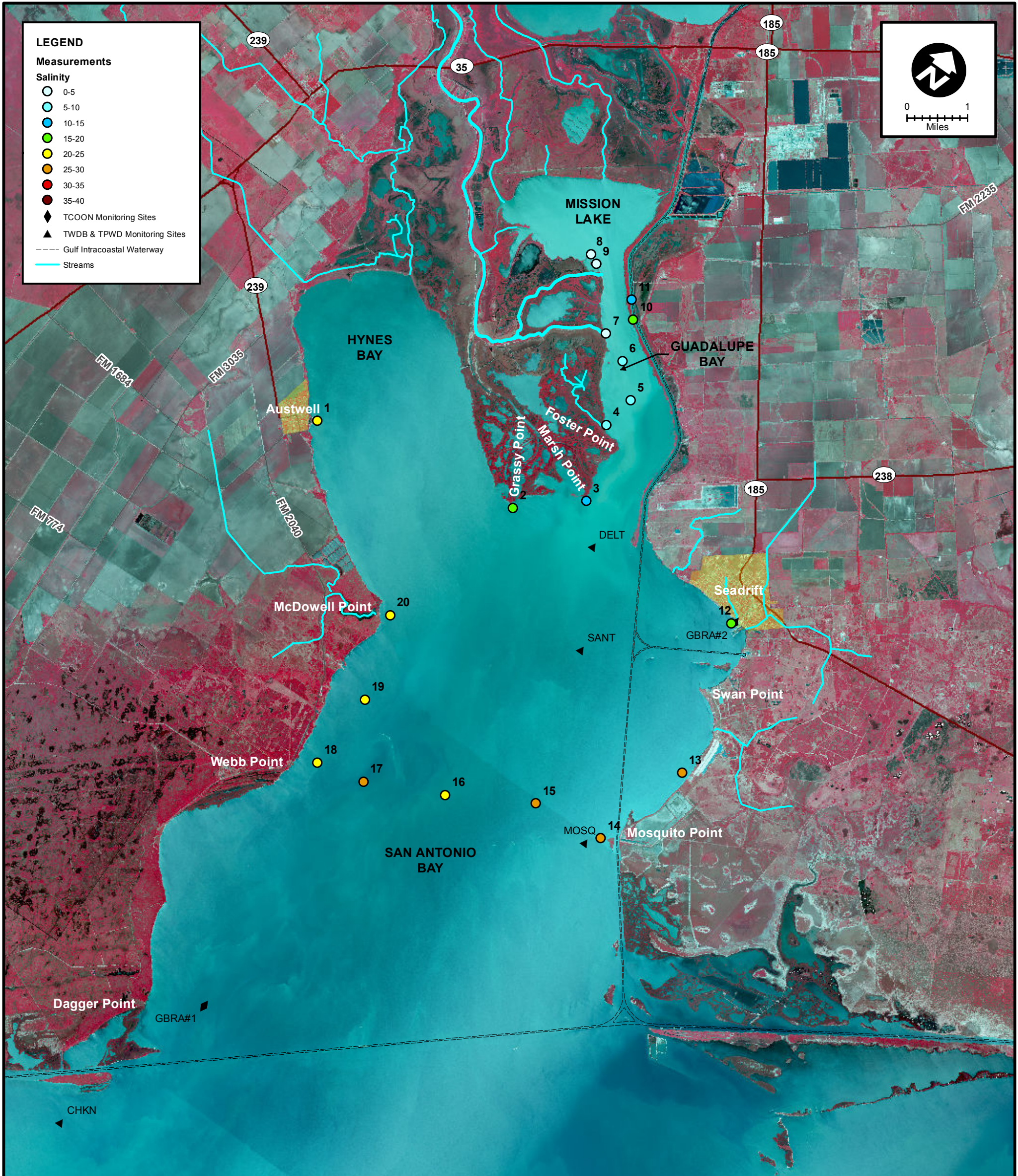
**LEGEND**

**Measurements**

**Salinity**

- 0-5
- 5-10
- 10-15
- 15-20
- 20-25
- 25-30
- 30-35
- 35-40

- ◆ TCOON Monitoring Sites
- ▲ TWDB & TPWD Monitoring Sites
- Gulf Intracoastal Waterway
- Streams



MEAS NO.	SITE DESCRIPTION	LATITUDE (N)	LONGITUDE (W)	TIME	TEMP (°C)	pH	DO (mg/L)	SC (µs)	SALINITY (PSU)	NOTES
1	Hynes Bay @ Austwell Pier	28 23 29.6	96 50 12.3	9:29	18.8	7.9	7.2	34,580	21.79	
2	SA Bay @ Grassy Point (Shellfish Marker No. 2)	28 24 1.4	96 46 45.7	10:31	19.3	8.3	8.7	26,800	16.46	
3	SA Bay @ Marsh Point	28 24 41.8	96 45 50.1	10:39	19.5	8.1	7.9	24,160	14.69	
4	Guadalupe Bay @ Redfish Bayou	28 25 46.1	96 46 15.4	10:54	20.3	8.2	9.0	14,890	8.67	
5	Guadalupe Bay @ Pipe No.2	28 26 15.5	96 46 9.1	11:00	20.6	8.2	9.2	13,020	7.51	
6	Guadalupe Bay @ Pipe No.3 near South Fork	28 26 39.8	96 46 37.3	11:06	20.6	8.2	9.2	10,420	5.91	
7	Guadalupe Bay @ South Fork	28 26 51.4	96 47 5.5	11:15	21.1	8.1	8.0	3,500	1.70	
8	Mission Lake Sonde (old)	28 27 41.3	96 48 0.9	12:24	22.2	7.9	8.1	3,148	1.64	
9	Guadalupe Bay @ Mission Lake Sonde (new)	28 27 36.7	96 47 51.4	13:08	22.5	8.0	8.8	3,646	1.92	Measured depth 31"
10	Guadalupe Bay @ Barge Canal Cut	28 27 14.5	96 46 50.9	13:19	20.0	8.1	8.3	24,800	15.88	
11	Barge Canal North of Cut	28 27 28.3	96 47 3.0	13:22	20.5	8.0	8.6	23,560	14.26	
12	SA Bay @ Seadrift	28 24 23.8	96 42 45.8	13:46	22.1	8.3	9.2	31,060	19.34	
13	SA Bay @ SABF Lodge (Falcon Point)	28 22 12.7	96 42 4.1	14:07	21.5	8.1	9.0	41,150	26.40	
14	SA Bay @ Mosquito Point	28 20 46.7	96 42 34.6	14:15	20.8	8.2	7.3	42,520	27.37	
15	SA Bay Mosquito to Web (1/4 across)	28 20 40.3	96 43 46.1	15:32	21.2	8.2	8.0	42,140	27.10	
16	SA Bay Mosquito to Web Midpoint	28 20 2.7	96 45 4.3	15:48	21.0	8.4	7.7	38,810	24.74	
17	SA Bay Mosquito to Webb (3/4 across)	28 19 32.8	96 46 17.9	15:58	21.6	8.2	8.5	40,180	25.75	
18	SA Bay @ Webb Point	28 19 24.4	96 47 5.6	16:04	22.9	8.2	8.7	38,770	24.69	
19	SA Bay between Webb & McDowell Point	28 20 32.4	96 47 1.3	16:13	21.7	8.4	8.2	35,690	22.55	
20	McDowell Point	28 21 45.2	96 47 26.9	16:20	22.6	8.2	9.9	34,660	21.81	



**SALINITY MEASUREMENT DATA**  
SAN ANTONIO BAY

DATE:	5/05/2013
FIELD CREW:	DA, CH
AVG. DAILY FLOW AT USGS TIVOLI GAUGE:	1,190 CFS