

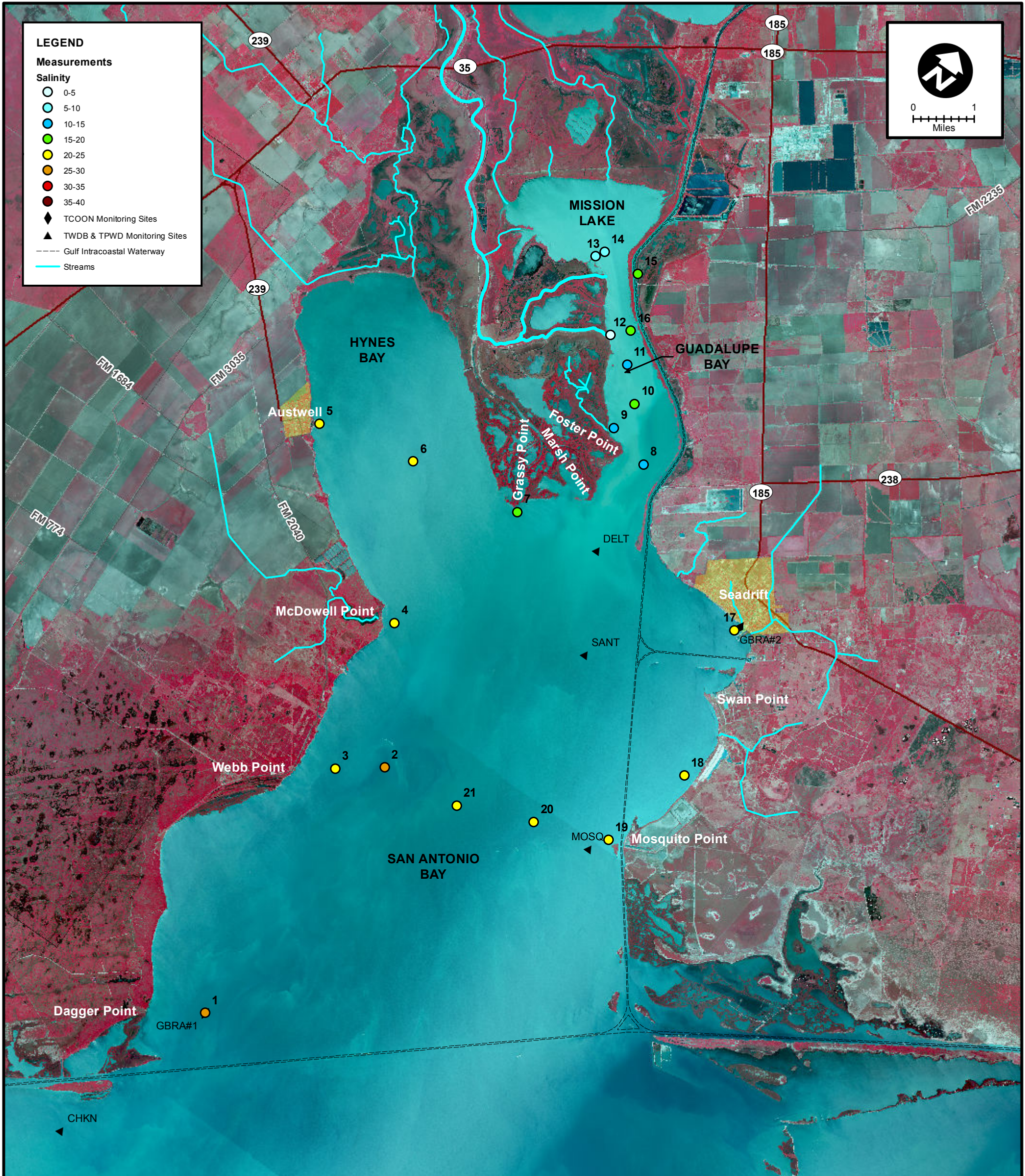
LEGEND

Measurements

Salinity

- 0-5
- 5-10
- 10-15
- 15-20
- 20-25
- 25-30
- 30-35
- 35-40

- ◆ TCOON Monitoring Sites
- ▲ TWDB & TPWD Monitoring Sites
- Gulf Intracoastal Waterway
- Streams



MEAS NO.	SITE DESCRIPTION	LATITUDE (N)	LONGITUDE (W)	TIME	TEMP (°C)	pH	DO (mg/L)	SC (µs)	SALINITY (PSU)	NOTES
1	TCOON GBRA No.1	28 15 34.9	96 46 25.3	10:40	14.7	8.0	7.7	45,160	29.24	
2	SA Bay between Mosquito Point & Webb (3/4 across)	28 19 56.0	96 46 13.7	11:05	14.4	8.0	8.3	39,790	25.41	
3	SA Bay @ Webb Point	28 19 31.4	96 46 52.7	11:15	14.2	8.1	8.1	37,680	23.93	
4	SA Bay @ McDowell Point	28 21 43.6	96 47 23.9	11:33	13.7	8.0	8.3	35,300	22.26	
5	Hynes Bay @ Austwell Pier	28 23 29.6	96 50 12.3	11:48	13.1	8.1	8.9	33,460	20.98	
6	Hynes Bay between Austwell & Grassy Point	28 23 47.7	96 48 36.2	11:59	14.3	8.1	9.0	33,030	20.71	
7	SA Bay at Grassy Point (Shellfish marker No. 2)	28 24 1.4	96 46 45.0	12:09	13.9	8.2	9.6	27,000	16.60	
8	Guadalupe Bay @ Pipe No.1	28 25 35.9	96 45 29.0	12:20	14.2	8.4	11.3	17,270	10.19	
9	Guadalupe Bay @ Redfish Bayou	28 25 47.7	96 46 12.5	12:25	13.7	8.2	9.6	18,430	10.95	
10	Guadalupe Bay @ Pipe No.2	28 26 14.7	96 46 8.9	12:30	14.4	8.2	9.7	24,800	15.50	
11	Guadalupe Bay @ Pipe No.3	28 26 39.3	96 46 36.3	12:36	14.5	8.2	9.8	23,270	14.12	
12	Guadalupe Bay @ South Fork	28 26 52.3	96 47 5.9	12:41	15.5	8.2	9.6	2,410	1.33	
13	Mission Lake Sonde	28 27 41.4	96 48 0.3	12:50	14.7	8.3	10.1	11,500	6.48	
14	Mission Lake Mount @ Center	28 27 48.8	96 47 55.5	12:57	14.4	8.3	10.4	16,940	9.98	
15	Victoria Barge Canal	28 27 48.8	96 47 16.9	13:21	16.8	8.2	9.8	27,940	17.25	
16	Barge Canal Cut	28 27 5.1	96 46 51.7	13:26	16.7	8.2	9.7	31,680	19.84	
17	SA Bay @ Seadrift	28 24 21.4	96 42 45.7	13:46	15.3	8.2	9.3	35,410	22.35	
18	SA Bay @ Falcon Point	28 22 13.7	96 42 7.7	13:58	15.4	8.2	9.3	34,520	21.78	
19	SA Bay @ Mosquito Point	28 20 51.6	96 42 33.9	14:27	15.6	8.2	9.2	38,200	24.34	
20	SA Bay between Mosquito Point & Web (1/4 across)	28 20 28.5	96 43 43.9	14:24	15.6	8.2	9.3	35,220	22.23	
21	SA Bay between Mosquito Point & Web (midpoint)	28 20 3.2	96 44 54.9	14:40	15.6	8.2	9.3	36,490	23.12	



SALINITY MEASUREMENT DATA
SAN ANTONIO BAY

DATE:	3/06/2013
FIELD CREW:	DA, CH, BE
AVG. DAILY FLOW AT USGS TIVOLI GAUGE:	619 CFS