

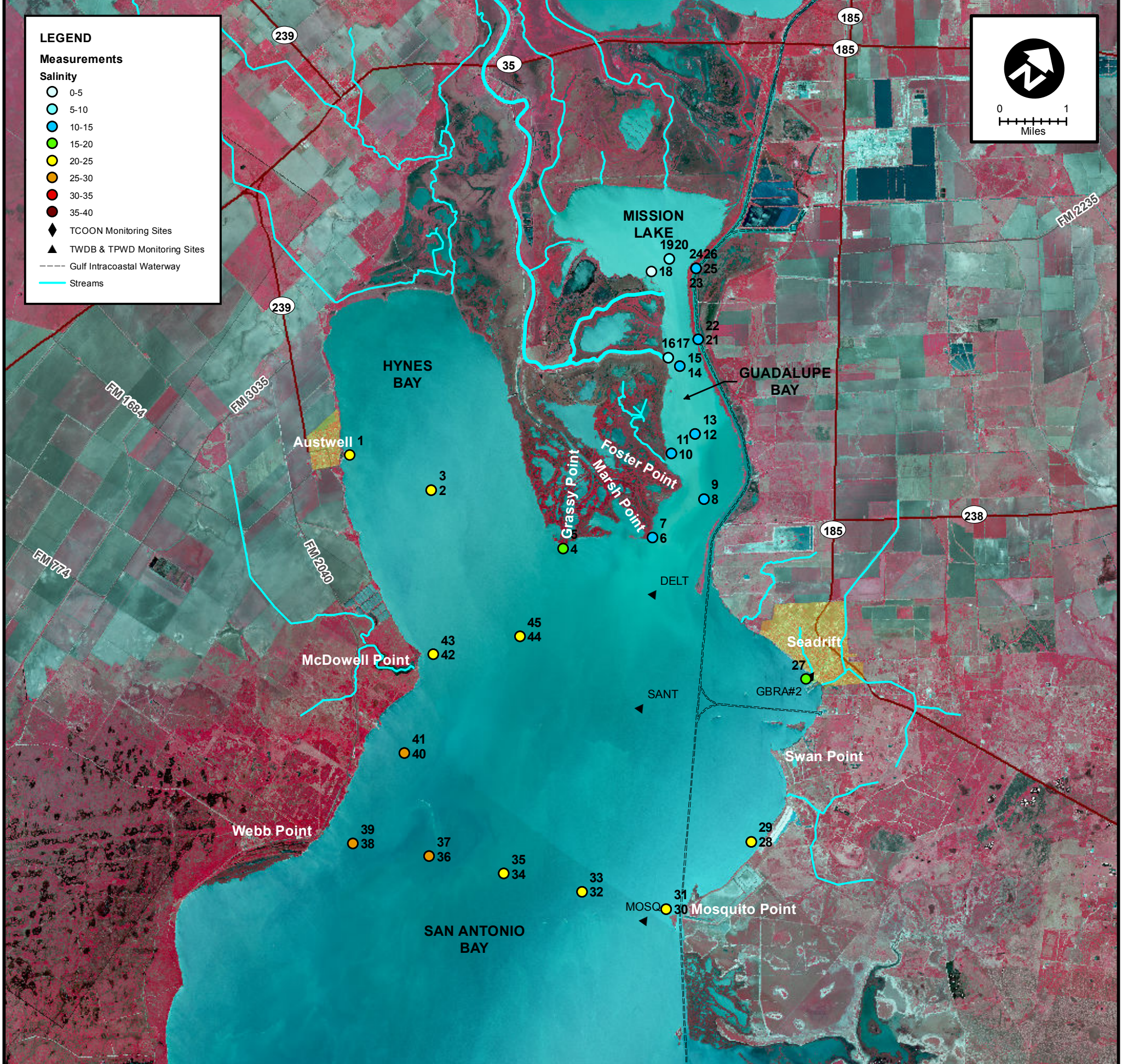
LEGEND

Measurements

Salinity

- 0-5
- 5-10
- 10-15
- 15-20
- 20-25
- 25-30
- 30-35
- 35-40

- ◆ TCOON Monitoring Sites
- ▲ TWDB & TPWD Monitoring Sites
- Gulf Intracoastal Waterway
- Streams



MEAS NO.	SITE DESCRIPTION	LATITUDE (N)	LONGITUDE (W)	TIME	TEMP (°C)	pH	DO (mg/L)	SC (µs)	SALINITY (PSU)	NOTES
1	Hynes Bay at Austwell Pier	28 23 29.6	96 50 12.3	8:40	14.3	8.0	7.2	34,000	21.37	
2	Hynes Bay between Austwell & Grassy Point	28 23 42.4	96 48 54.8	9:12	15.4	8.3	8.6	32,600	20.40	
3	Hynes Bay between Austwell & Grassy Point	28 23 42.4	96 48 54.8	9:14	15.5	8.3	8.6	33,900	21.32	
4	SA Bay @ Grassy Point (Shellfish marker No. 2)	28 24 2.1	96 46 48.9	9:24	15.7	8.3	8.8	26,950	16.59	
5	SA Bay @ Grassy Point (Shellfish marker No. 2)	28 24 2.1	96 46 48.9	9:25	15.3	8.2	7.0	29,450	18.31	measurement taken at bottom
6	SA Bay @ Marsh Point	28 24 48.3	96 45 48.4	9:30	15.4	8.3	9.2	18,970	11.31	61 cm turbidity reading
7	SA Bay @ Marsh Point	28 24 48.3	96 45 48.4	9:30	15.6	8.3	9.7	19,700	11.79	measurement taken at bottom
8	Guadalupe Bay @ Foster Point	28 25 36.0	96 45 29.6	9:38	15.0	8.3	9.4	17,580	10.41	69 cm turbidity reading
9	Guadalupe Bay @ Foster Point	28 25 36.0	96 45 29.6	9:39	16.8	8.1	7.6	22,500	13.67	
10	Guadalupe Bay @ Redfish Bayou	28 25 51.3	96 46 16.2	9:47	14.5	8.4	10.0	5,970	3.26	61 cm turbidity reading
11	Guadalupe Bay @ Redfish Bayou	28 25 51.3	96 46 16.2	9:48	15.9	8.1	8.3	19,680	11.80	stred up boom w/ boat
12	Guadalupe Bay @ Pipe No.2 North of Redfish Bayou	28 26 14.5	96 46 8.2	9:51	14.7	8.5	9.9	6,000	3.40	68 cm turbidity reading
13	Guadalupe Bay @ Pipe No.2 North of Redfish Bayou	28 26 14.5	96 46 8.2	9:51	16.4	8.1	8.5	21,100	12.72	measurement taken at bottom
14	Guadalupe Bay @ Pipe No. 3 near South Fork	28 26 52.1	96 46 53.1	9:58	15.7	8.4	9.9	9,300	5.30	46 cm turbidity reading
15	Guadalupe Bay @ Pipe No. 3 near South Fork	28 26 52.1	96 46 53.1	9:58	17.3	8.0	6.8	20,550	12.34	
16	Guadalupe Bay @ South Fork	28 26 52.6	96 47 5.8	10:02	17.8	8.2	7.8	1,100	0.55	23 cm turbidity reading
17	Guadalupe Bay @ South Fork	28 26 52.6	96 47 5.8	10:02	16.4	8.3	7.0	13,980	8.37	measurement taken at bottom
18	Mission Lake Sonde	28 27 41.1	96 48 0.8	10:45	15.9	8.4	10.1	4,780	2.48	39 cm turbidity reading
19	Mission Lake at North side of Guadalupe Bay	28 27 57.4	96 47 54.1	10:55	15.9	8.4	10.2	4,540	2.44	42 cm turbidity reading
20	Mission Lake at North side of Guadalupe Bay	28 27 57.4	96 47 54.1	10:55	15.9	8.2	9.5	9,260	5.22	measurement taken at bottom
21	Barge Canal @ Cut	28 27 17.4	96 46 52.8	11:03	16.3	8.3	9.9	14,000	8.07	
22	Barge Canal @ Cut	28 27 17.4	96 46 52.8	11:04	17.3	8.1	7.6	21,450	12.92	measurement at 1' abv bottom
23	Barge Canal East of Cut	28 28 2.9	96 47 29.6	11:09	17.3	8.2	9.0	12,960	10.64	Barge just passed thru canal
24	Barge Canal East of Cut	28 28 2.9	96 47 29.6	11:09	17.4	8.8	7.6	23,200	14.21	
25	Barge Canal East of Cut	28 28 2.9	96 47 29.6	11:10	17.3	8.1	7.7	22,400	13.55	
26	Barge Canal East of Cut	28 28 2.9	96 47 29.6	11:10	17.3	8.2	8.3	18,100	10.76	
27	SA Bay @ Seadrift	28 24 23.3	96 42 45.3	11:34	16.9	8.3	9.4	26,830	16.51	47 cm turbidity reading
28	SA Bay @ Swan Point	28 22 13.5	96 42 5.1	11:49	16.4	8.3	9.2	36,700	23.27	74 cm turbidity reading
29	SA Bay @ Swan Point	28 22 13.5	96 42 5.1	11:49	16.4	8.3	9.5	36,650	23.23	measurement taken at bottom
30	SA Bay @ Mosquito Point	28 20 52.5	96 42 34.5	12:05	16.7	8.3	8.8	38,980	24.87	98 cm turbidity reading
31	SA Bay @ Mosquito Point	28 20 52.5	96 42 34.5	12:05	16.7	8.2	8.9	38,960	24.86	measurement taken at bottom
32	SA Bay between Mosquito & Webb 1/4 across	28 20 26.9	96 43 45.0	12:13	16.9	8.3	8.4	38,700	24.67	1.34 m turbidity reading
33	SA Bay between Mosquito & Webb 1/4 across	28 20 26.9	96 43 45.0	12:13	16.3	8.3	8.5	38,650	24.62	measurement taken at bottom
34	SA Bay between Mosquito & Webb 1/2 across	28 20 4.5	96 44 51.5	12:21	17.0	8.5	8.6	37,580	23.89	1.35 m turbidity reading
35	SA Bay between Mosquito & Webb 1/2 across	28 20 4.5	96 44 51.5	12:21	16.9	8.6	10.5	37,570	23.88	
36	SA Bay between Mosquito & Webb 3/4 across	28 19 43.2	96 45 55.0	12:27	17.1	8.4	9.1	38,450	24.50	1.39 m turbidity reading
37	SA Bay between Mosquito & Webb 3/4 across	28 19 43.2	96 45 55.0	12:27	16.6	8.3	9.2	41,300	26.59	measurement taken at bottom
38	SA Bay @ Webb Point	28 19 18.0	96 46 57.5	12:35	16.7	8.4	8.8	39,130	24.98	> 1.10 turbidity reading
39	SA Bay @ Webb Point	28 19 18.0	96 46 57.5	12:35	17.2	8.4	12.4	41,230	26.46	measurement taken at bottom
40	SA Bay between Webb Point & McDowell Point	28 20 39.4	96 47 4.3	12:43	16.7	8.4	8.3	37,820	24.06	> 1.40 turbidity reading
41	SA Bay between Webb Point & McDowell Point	28 20 39.4	96 47 4.3	12:43	16.6	8.4	11.8	40,250	25.77	measurement taken at bottom
42	SA Bay @ McDowell Point	28 21 56.4	96 47 31.8	12:52	16.8	8.4	8.8	33,930	21.34	1.05 turbidity reading
43	SA Bay @ McDowell Point	28 21 56.4	96 47 31.8	12:52	16.2	8.5	10.6	35,250	22.26	measurement taken at bottom
44	SA Bay between McDowell Pt & Austwell pier	28 22 46.0	96 46 37.1	12:58	16.7	8.4	8.3	33,510	21.05	71 cm turbidity reading
45	SA Bay between McDowell Pt & Austwell pier	28 22 46.0	96 46 37.1	12:58	16.7	8.4	10.1	33,500	21.05	measurement taken at bottom



SALINITY MEASUREMENT DATA
SAN ANTONIO BAY

DATE: 2/01/2013

FIELD CREW: DA, CH, LG

AVG. DAILY FLOW AT USGS TIVOLI GAUGE: 742 CFS